

# HDMI Type-A Test Adapter

User Manual



WILDER  
TECHNOLOGIES

It's all about integrity

## Table of Contents

Introduction.....	3
Product Inspection .....	5
The HDMI Type-A Test Adapter Care and Handling Precautions .....	6
General Test Adapter, Cable, and Connector.....	8
Handling and Storage .....	8
Visual Inspection .....	8
Cleaning .....	8
Making Connections .....	8
Electrostatic Discharge Information.....	9
User Model .....	10
Calibration .....	13
SOLT.....	14
1X-THRU .....	15
E-EDID/Low Frequency Control Board .....	16
Mechanical and Environmental Specifications.....	17
Electrical Specifications .....	20
Wilder Technologies, LLC – Limited Warranty .....	30
Wilder Technologies, LLC – Terms & Conditions of Sale .....	31
Compliance with Environmental Legislation .....	32
WEEE Compliance Statement.....	<b>Error! Bookmark not defined.</b>
Glossary of Terms .....	33
E-EDID Addendum A-1.....	34
E-EDID/Low Frequency Control Board reference information.....	34
E-EDID/Low Frequency Control Board User Model.....	37
E-EDID EE-PROM.....	42
Index .....	48

### Introduction

This user's guide documents the HDMI Type-A Test Adapter (HDMI-TPA) the associated Calibration Module, and the E-EDID/Low Frequency Control Board. This test adapter DOES NOT support HDMI Ethernet or ARC functionality. The two test adapter types, shown in Figures 1 and 2, test HDMI Interface (HDMI) cables and devices against the HDMI Compliance Test Specification. The Calibration Module, shown on Page 13, is used to zero-out test adapter attributes (using SOLT, with either the 1X-THRU or the 2X-THRU). The E-EDID/Low Frequency Control Board shown on Page 16, and further discussed in Addendum A-1, provides measurement access to several test points.

The TPA-P and TPA-R test adapter assemblies allow easy access, via SMA connections, to measure or inject TMDS Data and Clock signals. These test adapters also provide access to DDC/CEC signals, including the Hot Plug Detect, +5V Power, SDA, SCL, CEC, DDC/CEC Return, Utility, and Ground via an eight-position low-speed connector. A mating eight-position low-speed connector is provided on the E-EDID/Low Frequency Control Board for additional access to these signals.

**NOTE: To avoid damaging the cables, use the handling techniques described in the Care and Handling section before making any connections or configuring a test setup.**

**Always use a static-safe workstation when performing tests, as explained in the "Electrostatic Discharge Information" section.**

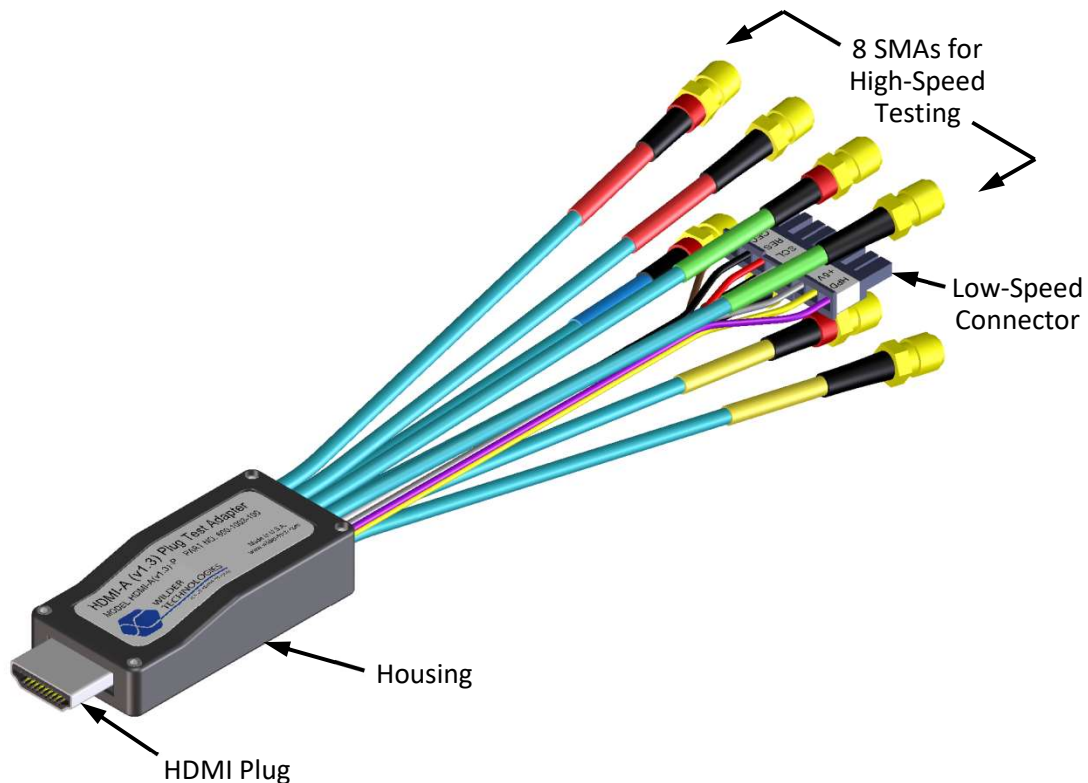


Figure 1. The HDMI Type-A Test Adapter (Plug)

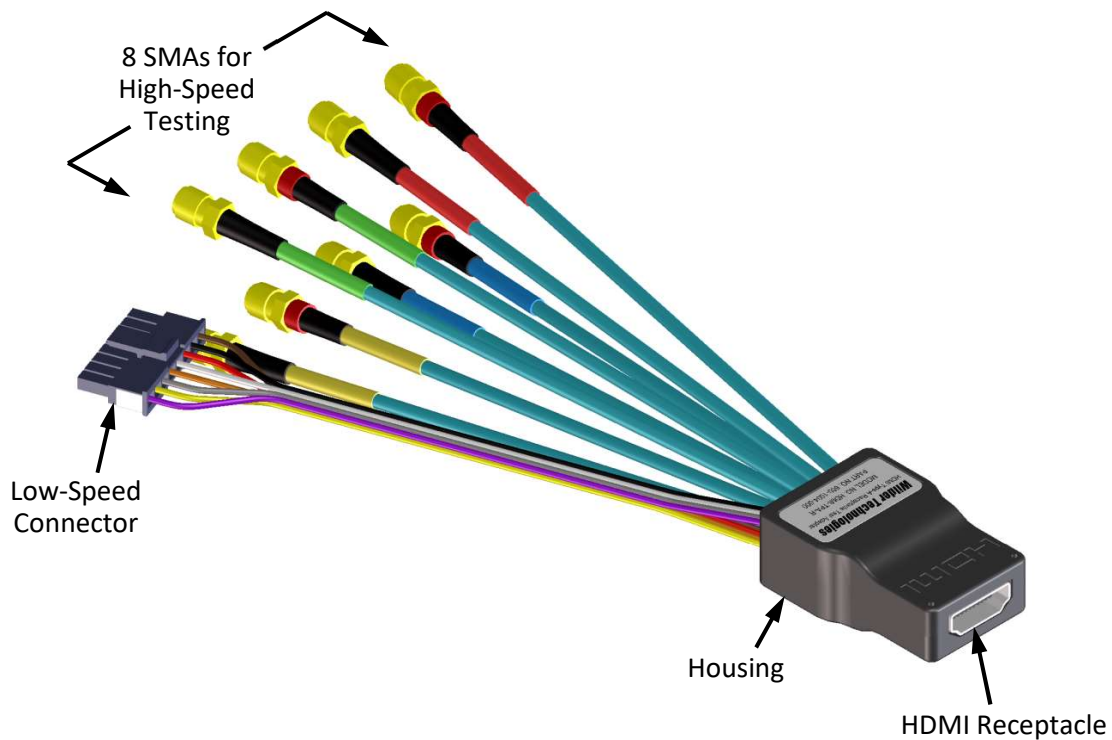


Figure 2. The HDMI Type-A Test Adapter (Receptacle)

**NOTE: The metal shell of both the plug (TPA-P) and receptacle (TPA-R) connectors are configured at the factory to tie high-speed ground to chassis ground.**

The low-speed 8-position receptacle connector is keyed and latching (Molex part number 43645-0800). The mating plug connector housing and contact pins for 26-30awg wire are provided with each HDMI-TPA assembly (Molex part numbers 43640-0801 for the 8-position housing and 43031-0011 for the 26-30awg pin contact). Replacement plug parts can be purchased through Molex distributors.

### Product Inspection

Upon receiving the HDMI-TPA from Wilder Technologies, perform the following product inspection:

- Inspect the outer shipping container, foam-lined instrument case, and product for damage. Retain the outer cardboard shipping container until the contents of the shipment have been inspected for completeness and the product has been checked mechanically and electrically. Use the foam-lined instrument-case for secure storage of the Wilder Technologies HDMI Test Adapter when not in use.
- Locate the shipping list and verify that all items ordered were received.
- In the unlikely event that the product is defective or incomplete, the “Limited Warranty” section discusses how to contact Wilder Technologies for technical assistance and/or how to package the product for return.

### The HDMI Type-A Test Adapter Care and Handling Precautions

The HDMI Test Adapter requires careful handling to avoid damage. Improper handling techniques, or using too small a cable bend radius, can damage the coaxial cable connections within the adapter housing or the cables themselves. This can occur at any point along the cable. To achieve optimum performance and to prolong the HDMI-TPA's life, observe the following handling precautions:

- **CAUTION 1: Avoid Torque Forces (Twisting)**  
While individual coaxial cables within the test adapter have some rotational freedom, twisting the HDMI-TPA as a unit, with one end held stationary, in excess of +/- 90° may damage or severely degrade performance. Adherence to Caution 5 (below) helps to avoid exceeding twist limits.
- **CAUTION 2: Avoid Sharp Cable Bends**  
Never bend coaxial cables into a radius of 26 mm (1-inch) or less. Never bend cables greater than 90°. Single or multiple cable bends must be kept within this limit. Bending the HDMI-TPA cables less than a 26mm (1-Inch) radius will permanently damage or severely degrade test adapter performance.
- **CAUTION 3: Avoid Cable Tension (Pull Forces)**  
Never apply tension (pull forces) to an individual coaxial cable that is greater than 2.3 kg (5 lbs.). To avoid applying tension, always place accessories and equipment on a surface that allows adjustment to eliminate tension on the HDMI-TPA and cables. Use adjustable elevation stands or apparatus to accurately place and support the HDMI-TPA.
- **CAUTION 4: Connect the HDMI-TPA First**  
To prevent twisting, bending, or applying tension to the coaxial cables when connecting a HDMI-TPA, always attach the HDMI-TPA to the device under test (DUT) or cable under test before attaching any SMA connectors. Carefully align the HDMI Type-A connectors and then gently push the connectors together until fully seated.

If the HDMI-TPA must be turned or twisted to make connection to the DUT, avoid using the HDMI-TPA housing alone to make this occur. Try to distribute the torque forces along the length of the test setup and cabling. If this is not possible, it is recommended to first loosen or disconnect the SMA connections at the HDMI-TPA, make the connection to the DUT and then re-tighten or attach the test equipment leads.

---

**NOTE: Only grip the test adapter housing when inserting or extracting the HDMI-TPA to or from the DUT. Pulling directly on the HDMI-TPA cables or using them to insert the HDMI-TPA may cause damage.**

---

- **CAUTION 5: Carefully Make SMA Connections**  
To connect the HDMI-TPA SMA connectors, follow these steps:
  1. Hold the cable stationary by grasping the cable at the black heat-shrink section near the SMA connector.
  2. Insert the mating SMA barrel and hand-tighten the free-spinning SMA nut onto the connector while avoiding pulling, bending, or twisting the HDMI-TPA coaxial cable.

3. The HDMI-TPA SMA connectors have flats that accept an open-end 1/4-inch or 6.5mm wrench. When attaching instrument cables to the HDMI-TPA, it is recommended that the HDMI-TPA SMA connectors be mechanically held and the test leads be tightened to the equipment manufacturer's torque recommendations, normally 5 in-lbs, using a 5/16-inch open-end wrench.

If the test set-up requires repositioning, first loosen or disconnect the SMA connections to avoid twisting, bending, or tension.

---

**NOTE: A drop in signal amplitude by half or 6db during the testing of a lane may indicate that a cable has been mechanically pulled free of coaxial cable connections internal to the assembly. This could be determined by checking if the cable has any lateral play relative to the TPA. This would only occur when the TPA has exceeded the pull force as specified within the mechanical specification. If the cable cannot be re-seated, the test adapter will need to be sent back to the factory for service.**

---

- **CAUTION 6: Independently Support Instrument Cables or Accessories**  
Excessive weight from instrument cables and/or accessories connected to the HDMI-TPA can cause damage or affect the test adapter performance. Be sure to provide appropriate means to support and stabilize all test set-up components.

### General Test Adapter, Cable, and Connector

Observing simple precautions can ensure accurate and reliable measurements.

#### Handling and Storage

Before each use of the HDMI-TPA, ensure that all connectors are clean. Handle all cables carefully and store the HDMI-TPA in the foam-lined instrument case when not in use, if possible. Do not set connectors contact end down. Install the SMA protective end caps when the HDMI-TPA is not in use.

#### Visual Inspection

Be sure to inspect all cables carefully before making a connection. Inspect all cables for metal particles, scratches, deformed threads, dents, or bent, broken, or misaligned center conductors. Do not use damaged cables.

#### Cleaning

If necessary, clean the connectors using low-pressure (less than 60 PSI) compressed air or nitrogen with an effective oil-vapor filter and condensation trap. Clean the cable threads, if necessary, using a lint-free swab or cleaning cloth moistened with isopropyl alcohol. Always completely dry a connector before use. Do not use abrasives to clean the connectors. Re-inspect connectors, making sure no particles or residue remains.

#### Making Connections

Before making any connections, review the “Care and Handling Precautions” section. Follow these guidelines when making connections:

- Align cables carefully
- Make preliminary connection lightly
- To tighten, turn connector nut only
- Do not apply bending force to cable
- Do not over-tighten preliminary connections
- Do not twist or screw-in cables
- Use a torque wrench, and do not tighten past the “break” point of the torque wrench



### Electrostatic Discharge Information

Protection against electrostatic discharge (ESD) is essential while connecting, inspecting, or cleaning the HDMI-TPA test adapter and connectors attached to a static-sensitive circuit (such as those found in test sets)

Electrostatic discharge can damage or destroy electronic components. Be sure to perform all work on electronic assemblies at a static-safe work station, using two types of ESD protection:

- Conductive table-mat and wrist-strap combination
- Conductive floor-mat and heel-strap combination

When used together, both of these types provide a significant level of ESD protection. Used alone, the table-mat and wrist-strap combination provide adequate ESD protection. To ensure user safety, the static-safe accessories must provide at least 1 MΩ of isolation from ground. Acceptable ESD accessories may be purchased from a local supplier.

---

**WARNING: These techniques for a static-safe work station should not be used when working on circuitry with a voltage potential greater than 500 volts.**

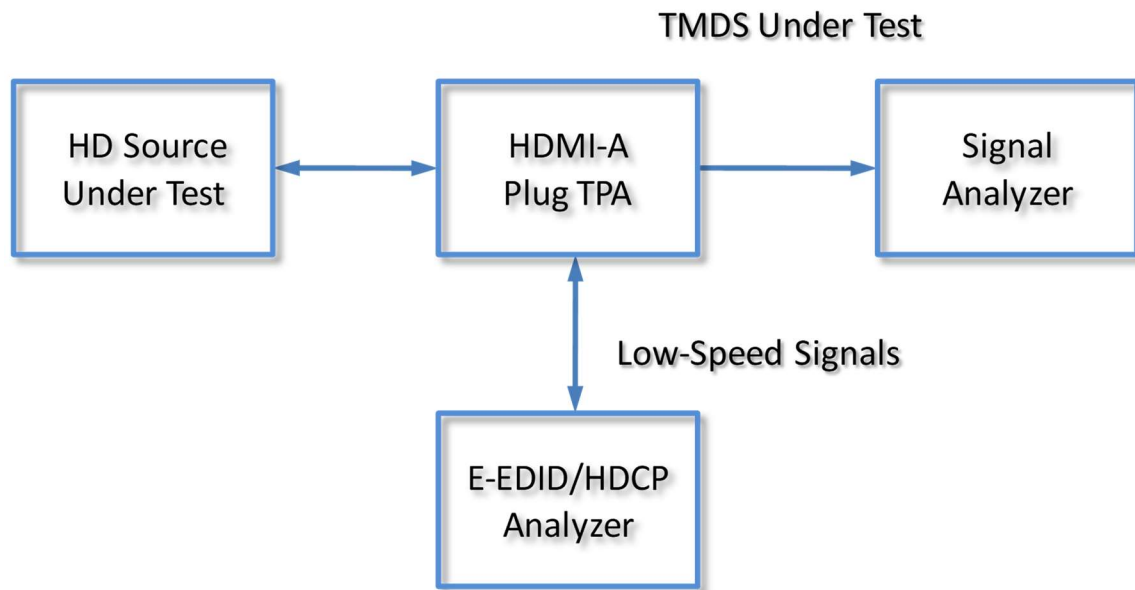
---

### User Model

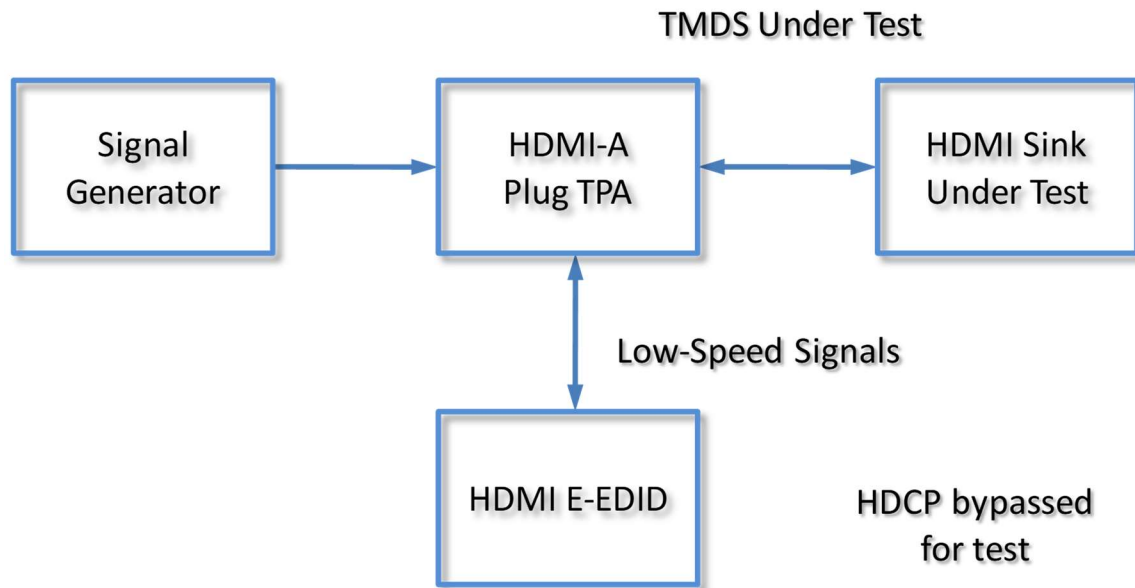
The HDMI Type-A TPA supports testing of the HDMI CTS version 1.4 with the exception of HEAC testing. It is capable of performing well beyond the scope of measurements contained in the CTS, limited only by the specifications, environmental, care and handling as stated in this document.

The following examples are suggestions for possible testing setups.

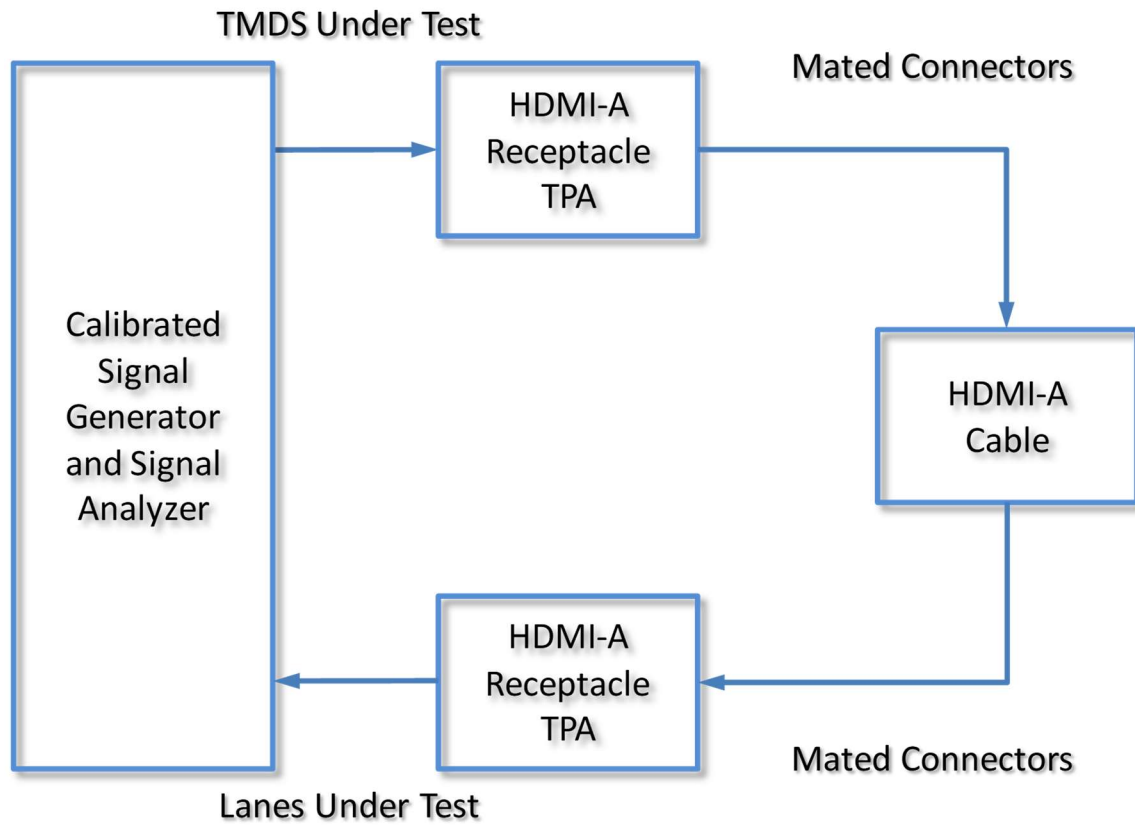
In this first example, an HDMI Type-A plug TPA acts as a sink:



In the second example, the HDMI Type-A plug acts as a source:



The third example shows two HDMI Type-A Receptacle TPAs acting as source and sink:



### Calibration

The HDMI Plug and Receptacle Test Adapters are passive components. Therefore, calibration for the errors generated must occur within the test instrumentation that drives the sink or looks at the response of the source.

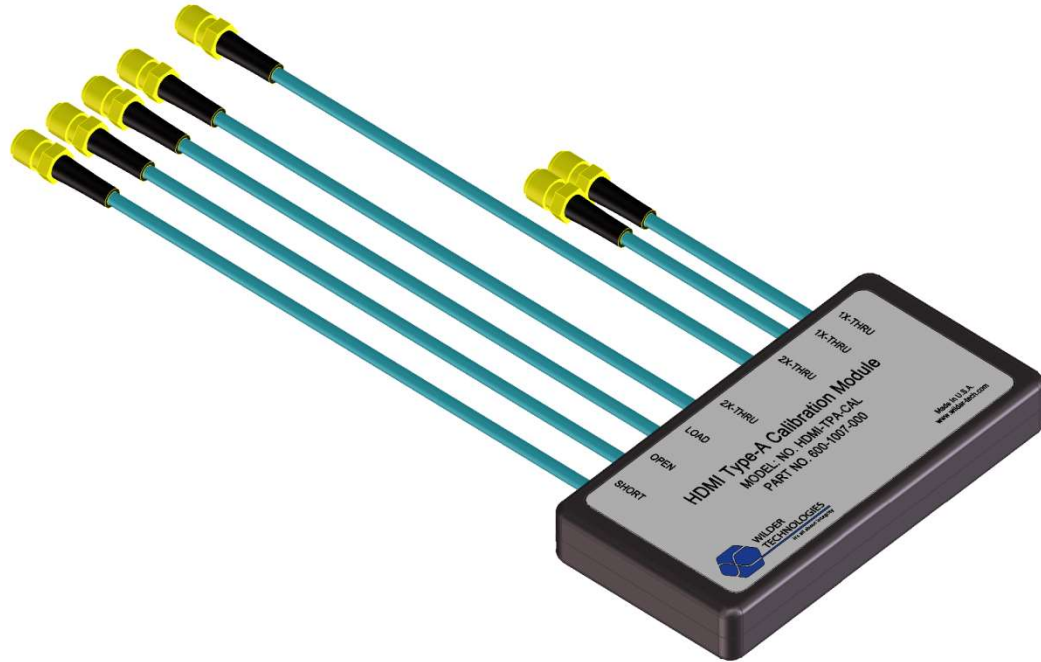


Figure 3. Calibration module (HDMI-TPA-C) showing standard 6-inch cable on SOLT and 3-inch cables connected to the 1X-THRU

### SOLT

SHORT, OPEN, LOAD, and 2X-THRU (SOLT) are calibration standards used to compensate for errors associated with the TPA when used for Jitter measurement, TDR, TDT, and VNA testing. SOLT represents the same electrical length and losses as the TPA through the HDMI Type-A connector pad, and enables the test engineer to compensate for the following six repeatable, systematic errors that occur when moving the reference plane:

- Signal leakage effects: *Directivity errors*
- Signal leakage effects: *Crosstalk errors*
- Reflection effects: *Source Impedance Mismatching errors*
- Reflection effects: *Load Impedance Mismatching errors*
- Bandwidth effects: *Receiver Transmission in Test Equipment errors*
- Bandwidth effects: *Receiver Reflection-tracking in Test Equipment errors*

These errors need to be corrected on each port. Refer to the Instrument Manual for instructions on the instrument's specific calibration process.

---

**NOTE: The reference plane is the boundary, both physically and electrically, between the calibrated and uncalibrated portions of the circuit. Everything outside the reference plane is considered part of the DUT. Any instrument that does not use calibration defines the DUT as the total of externally connected components. If the HDMI-TPA-C is not used, all of the HDMI-TPA and the 6-inch cables, as well as cables connecting the 6-inch cables to the test instrument, would be a part of the DUT.**

---

Non-repeatable errors, such as drift or random errors, can be reduced but not corrected. Drift errors aggregate over time or with environmental changes such as temperature shift. To eliminate drift errors, perform another calibration.

A random error cannot be corrected through calibration since the error occurred randomly. Random errors are typically associated with either test instrument noise or test repeatability problems. Reduce test instrument noise by increasing source power, lowering the IF bandwidth, or averaging results over multiple sweeps. Reduce test repeatability problems through the use of a torque wrench or, again, by averaging over multiple sweeps.

### 1X-THRU

The 1X-THRU is a calibration feature used to calibrate time domain instrumentation (for example, pre-emphasized pulse generators or AWGs, arbitrary waveform generators). 1X-THRU calibration compensates two error sources – cable losses and group delay:

- **Cable Losses** – Cable losses associated with the HDMI Type-A plug TPA, and its respective cabling that's connected to the test source, consist of skin loss and, to a lesser extent, dielectric loss. Pre-emphasis or de-emphasis is used at the signal source to correct for these cable losses. Pre-emphasis is a boost of the signal level just after an edge transition; de-emphasis is a reduction in the low-speed amplitude of the signal source. Typically, on a de-emphasized signal the levels have to be reset to attain the same output levels. Resultant signals from either pre-emphasis or de-emphasis are identical relative to the DUT.

For the purposes of this discussion, pre-emphasis will be used. To set the pre-emphasis, first determine the amount of signal boost by connecting the signal source, via the 1X-THRU and the respective cable used to connect the DUT to the source to a high-speed oscilloscope or a jitter measurement device. Trigger the oscilloscope or jitter measurement device using a trigger from the source. The trigger, a single event, indicates the start of the signal being sent to the DUT. Adjust pre-emphasis to maximize the eye opening.

- **Group Delay** – Group delay is the second error source for 1X-THRU calibration. When the DUT generates an output signal, it can be used to measure delay. To create a baseline delay measurement, connect the output signal cable to the input signal cable and the 1X-THRU. To determine corrected DUT delay, subtract this baseline measurement from the DUT delay measurements.

## E-EDID/Low Frequency Control Board

The E-EDID/Low Frequency Control Board (HDMI-TPA-E) is a tool that may be used to support testing HDMI cables and devices against the HDMI Compliance Test Specification (CTS). It does not support HDMI Ethernet or ARC functionality.

The E-EDID/Low Frequency Control Board contains jumpers that easily configure the low-speed signal lines for several test conditions listed in the CTS. Test points are also provided for easy measurement access. Specific features and usage models are presented within Addendum A-1 of this document.

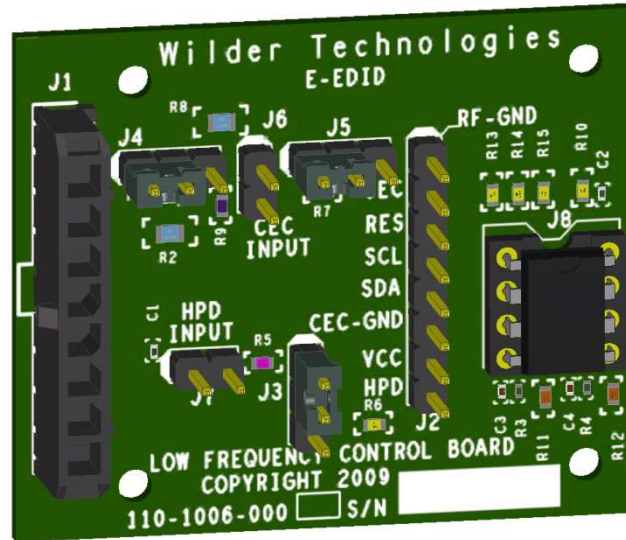


Figure 4. E-EDID/Low Frequency Control Board (HDMI-TPA-E)

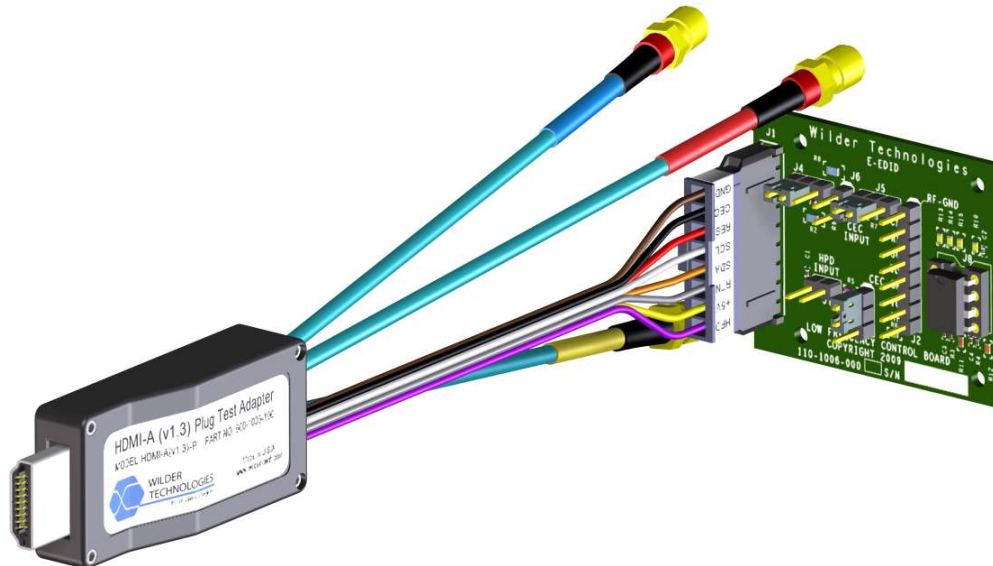


Figure 5. HDMI-TPA-E (E-EDID/Low Frequency Control Board) mated to a TPA-P (Plug) Test Adapter (five high-speed cables omitted for clarity.)



## Mechanical and Environmental Specifications

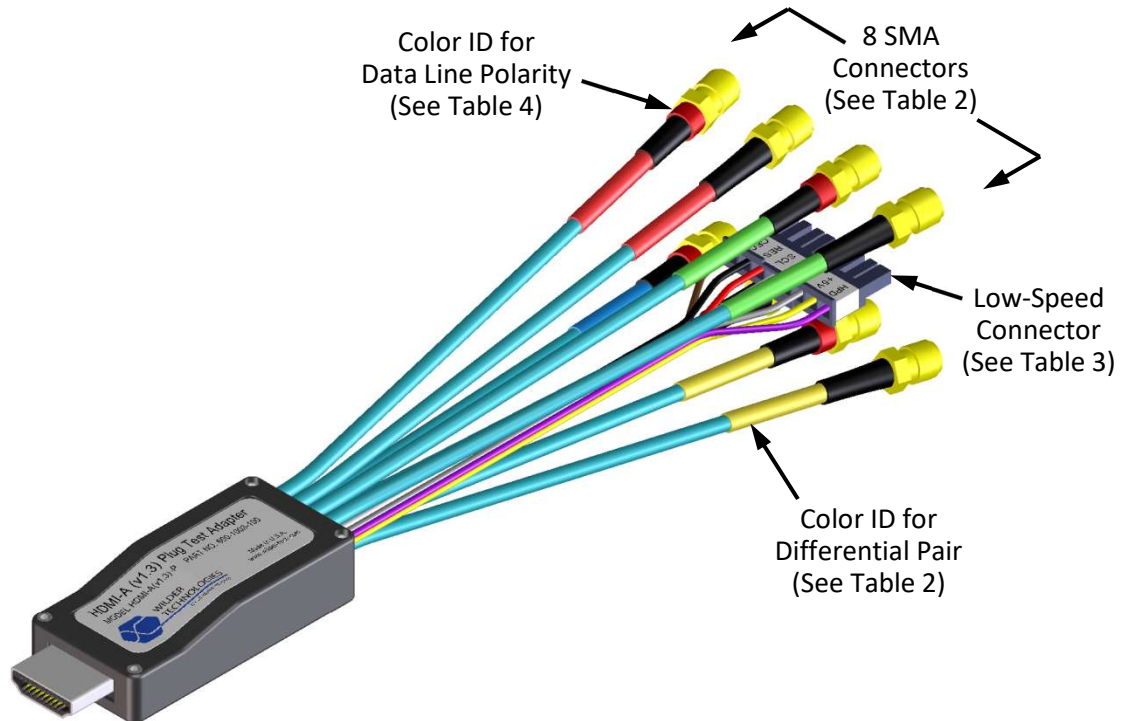
**NOTE: All specifications in this manual are subject to change.**

**Table 1. General Specifications**

ITEM	DESCRIPTION
Usage Environment	Controlled indoor environment
Test Adapter Length (w/standard cables)	180 mm +/- 2 mm (7.10 inches +/- .08 inches) (Characteristic)
Operating Temperature	0°C to +55°C (32°F to +131°F) (Characteristic)
Storage Temperature	-40°C to +70°C (-40°F to +158°F) (Characteristic)

### HDMI-TPA Cable Pinout

The HDMI-TPA cables provide eight SMA connectors (TMDS Data and Clock signals) and one low-speed connector. Labels clearly mark each cable or connector. The following figure refers to pin-description tables for each of the two connector types.



**Figure 6. Cable Connectors (TPA-P shown)**

**Table 2. SMA Cable Connectors (High-Speed)**

LABEL	COLOR ID FOR DIFFERENTIAL PAIR	DESCRIPTION
D2+	Red	TMDS Data2+ for Source and Sink
D2-	Red	TMDS Data2- for Source and Sink
D1+	Blue	TMDS Data1+ for Source and Sink
D1-	Blue	TMDS Data1- for Source and Sink
D0+	Green	TMDS Data0+ for Source and Sink
D0-	Green	TMDS Data0- for Source and Sink
CLK+	Yellow	TMDS Clock+ for Source and Sink
CLK-	Yellow	TMDS Clock- for Source and Sink

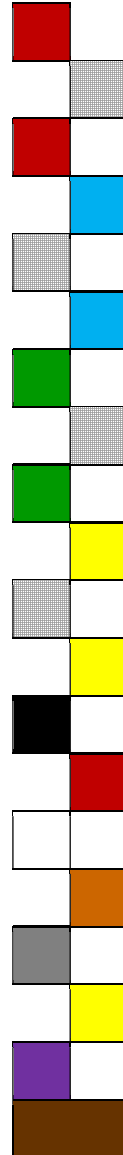
**Table 3. HDMI-TPA Eight-Position Cable Connector “P2” (Low-Speed)**

LABEL	PIN NO.	COLOR ID FOR TPA-P (PLUG)	COLOR ID FOR TPA-R (RECEPTACLE)	DESCRIPTION
GND	Pin 1	Brown	Brown	RF Ground
CEC	Pin 2	Black	Black	Consumer Electronics Control
RES	Pin 3	Red	Red	Utility (Reserved)
SCL	Pin 4	White	White	I <sup>2</sup> C Clock for DDC
SDA	Pin 5	Orange	Orange	I <sup>2</sup> C Data for DDC
RTN	Pin 6	Gray	Gray	DDC/CEC Ground
+5V	Pin 7	Yellow	Yellow	+5V Power
HPD	Pin 8	Violet	Violet	Hot Plug Detect

## HDMI Type-A Test Adapter User Manual

**Table 4. HDMI Type-A Plug and Receptacle Pin Assignments**

Pin Description	Connector Pin Number	Destination Number (Source/Sink)	Color ID for Data Line Polarity	Color Identification (Plug/Receptacle)
TMDS Data2+	1	D2+	Red	Red Label
Ground	2	Ground	N/A	N/A
TMDS Data2-	3	D2-	Black	Red Label
TMDS Data1+	4	D1+	Red	Blue Label
Ground	5	Ground	N/A	N/A
TMDS Data1-	6	D1-	Black	Blue Label
TMDS Data0+	7	D0+	Red	Green Label
Ground	8	Ground	N/A	N/A
TMDS Data0-	9	D0-	Black	Green Label
TMDS Clock+	10	CLK+	Red	Yellow Label
Ground	11	Ground	N/A	N/A
TMDS Clock-	12	CLK-	Black	Yellow Label
CEC	13	P2 Pin 2	N/A	Black Insulation
Utility (Reserved)	14	P2 Pin 3	N/A	Red Insulation
SCL	15	P2 Pin 4	N/A	White Insulation
SDA	16	P2 Pin 5	N/A	Orange Insulation
DDC/CEC Ground	17	P2 Pin 6	N/A	Gray Insulation
+5V POWER	18	P2 Pin 7	N/A	Yellow Insulation
Hot Plug Detect	19	P2 Pin 8	N/A	Violet Insulation
Ground	2, 5, 8, 11	P2 Pin 1	N/A	Brown Insulation



## Electrical Specifications

**NOTE: All specifications in this manual are subject to change.**

**Table 5. Electrical Specifications**

SPECIFICATION	MINIMUM	TYPICAL	MAXIMUM	NOTES
Insertion Loss (GHz), at -3 db	14	18.5		2X-THRU with six-inch cables
Return Loss (GHz), at -20 db	10	13		2X-THRU with six-inch cables
Insertion Loss (GHz), at -3 db		26.5		1X-THRU with three-inch cables
Return Loss (GHz), at -20 db		8.5		1X-THRU with three-inch cables
VSWR, at 10 GHz	1.21:1			2X-THRU with six-inch cables
Differential Impedance (ohms), at 100 ps Rise Time	95		105	All TMDS data and clock, Receptacle and Plug, excluding HDMI connector
Differential Impedance (ohms), at 200 ps Rise Time	90		110	All TMDS data and clock, Receptacle and Plug, including HDMI connector
Impedance (ohms) , 100 ps Rise Time	47.5		52.5	All TMDS data and clock, Receptacle and Plug, excluding HDMI connector
Impedance (ohms) , 100 ps Rise Time	47.5		52.5	SHORT, OPEN, LOAD, 1X-THRU, and 2X-THRU
Intra-lane Skew (ps)	-6		6	All TMDS data and clock, Receptacle and Plug
Inter-lane Skew (ps)	-6		6	All TMDS data and clock, Receptacle and Plug
NEXT (db), at 13 GHz, at 6.75 GHz at 4.05 GHz	-40	-53 -53		All TMDS data and clock, single aggressor, without HDMI connector, with six-inch cables and terminations
Current Carrying (A)	0.5			+5V Power and DDC/CEC Grounds

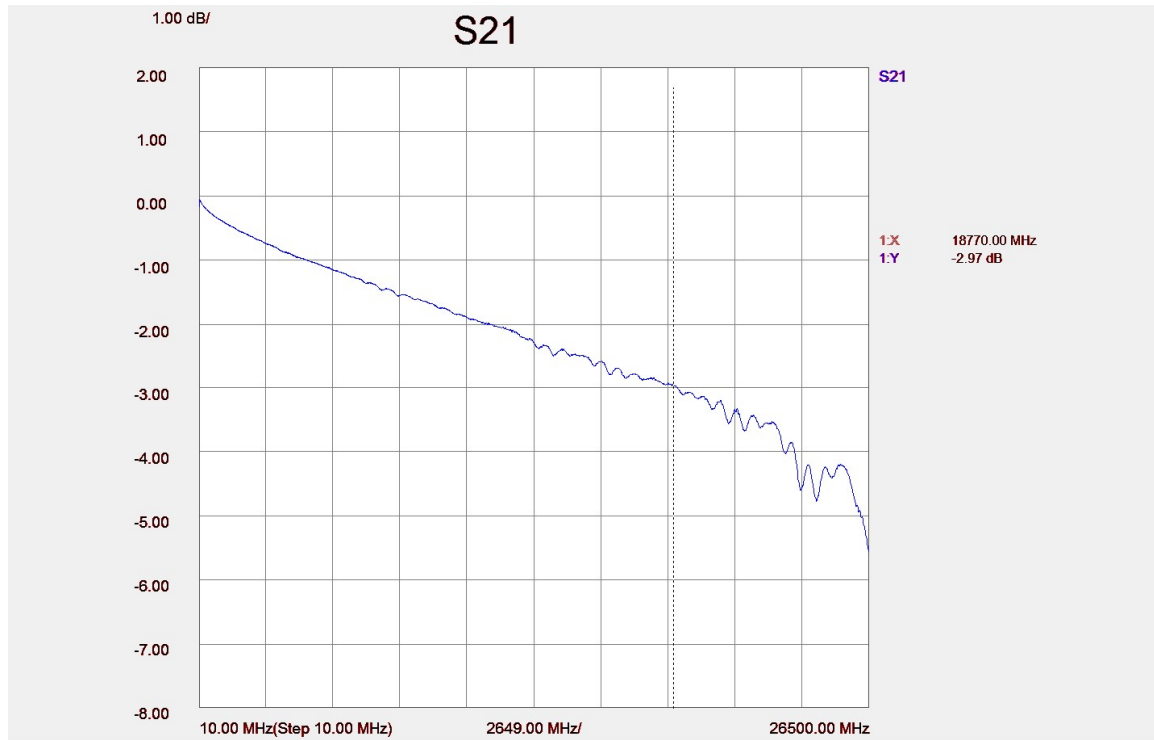


Figure 7. Typical 2X-THRU insertion loss

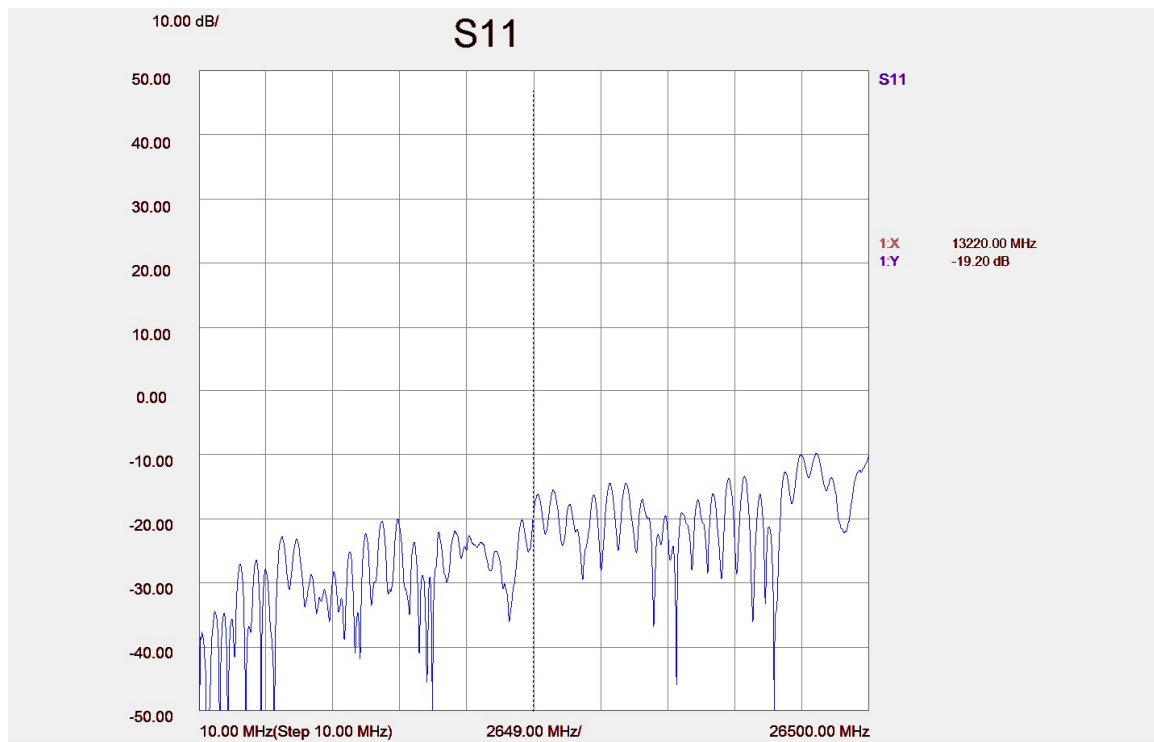


Figure 8. Typical 2X-THRU return loss

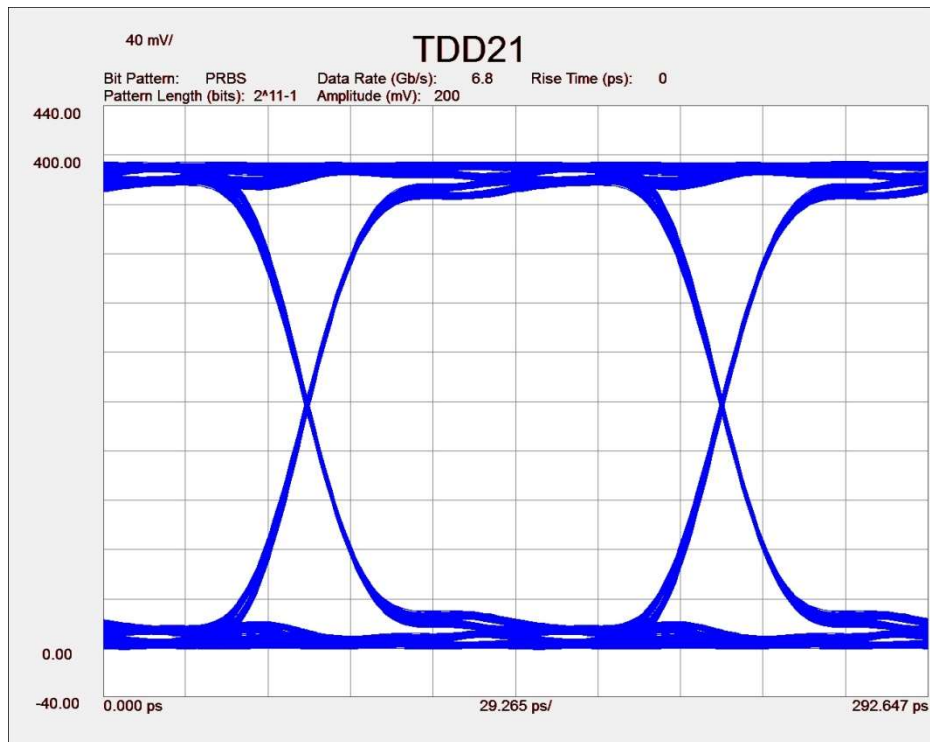
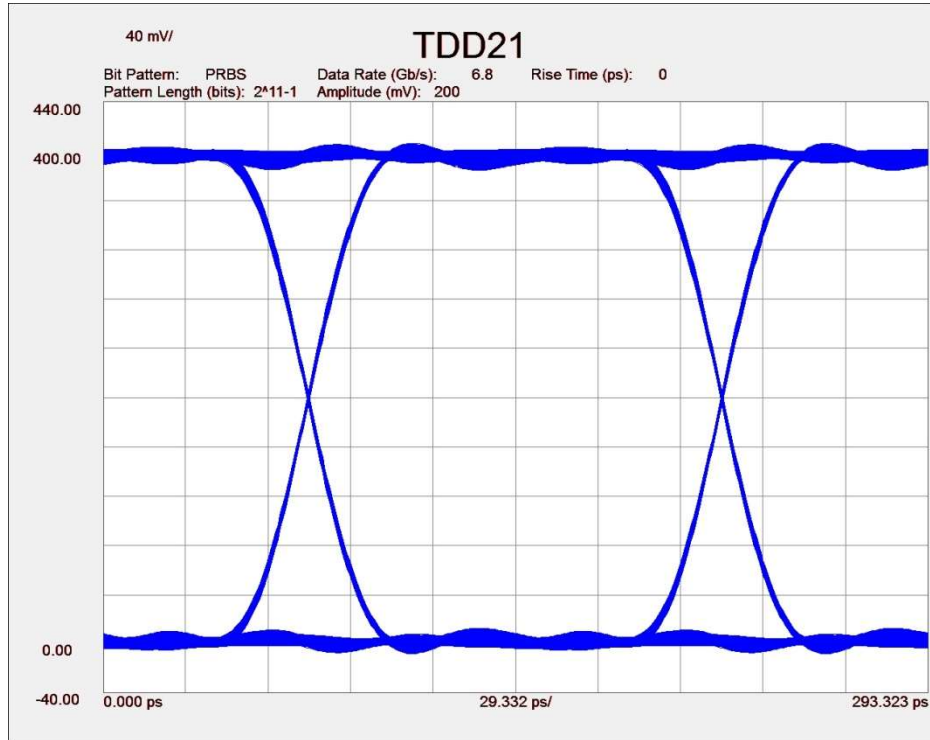


Figure 9. Typical mated pair 6.8 Gb/s eye diagram, with calibration (top) and without calibration (bottom)

Parameter Measurement Result	
Name	Measurement Result
Eye Level Zero(mV)	2.71
Eye Level One(mV)	395.34
Eye Level Mean(mV)	199.03
Eye Amplitude(mV)	392.64
Eye Height(mV)	375.33
Eye Height(db)	-4.26
Eye Width	1.45e-010
Eye Opening Factor	0.96
Eye Signal_to_Noise	61.17
Eye Duty Cycle Dist	9.47e-015
Eye Duty Cycle Dist(%)	0.01
Eye Rise Time (20-80)	2.40e-011
Eye Fall Time (80-20)	2.40e-011
Eye Jitter(PP)	2.28e-012
Eye Jitter(RMS)	4.00e-013

Parameter Measurement Result	
Name	Measurement Result
Eye Level Zero(mV)	11.44
Eye Level One(mV)	381.88
Eye Level Mean(mV)	196.66
Eye Amplitude(mV)	370.43
Eye Height(mV)	336.45
Eye Height(db)	-4.73
Eye Width	1.45e-010
Eye Opening Factor	0.91
Eye Signal_to_Noise	23.95
Eye Duty Cycle Dist	2.73e-014
Eye Duty Cycle Dist(%)	0.02
Eye Rise Time (20-80)	2.74e-011
Eye Fall Time (80-20)	2.73e-011
Eye Jitter(PP)	2.28e-012
Eye Jitter(RMS)	5.87e-013

Figure 10. Typical mated pair 6.8 Gb/s eye measurements, with calibration (top) and without calibration (bottom)

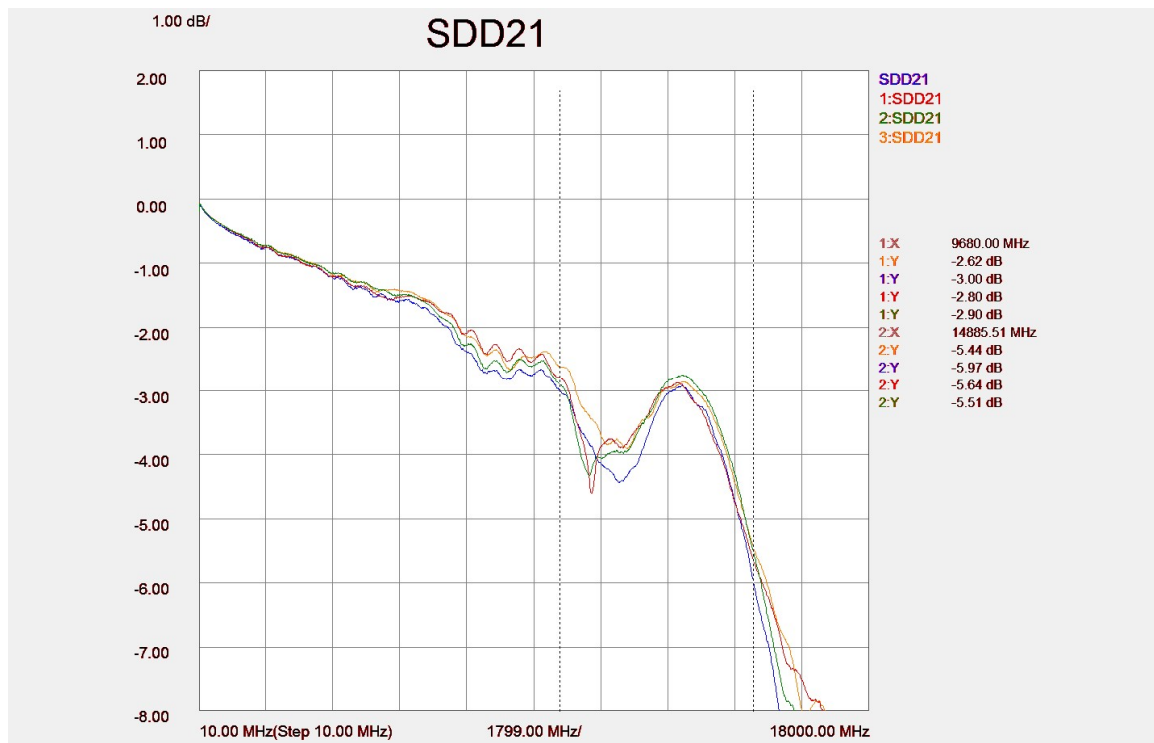


Figure 11. Typical mated pair balanced insertion loss, with calibration (top) and without calibration (bottom)



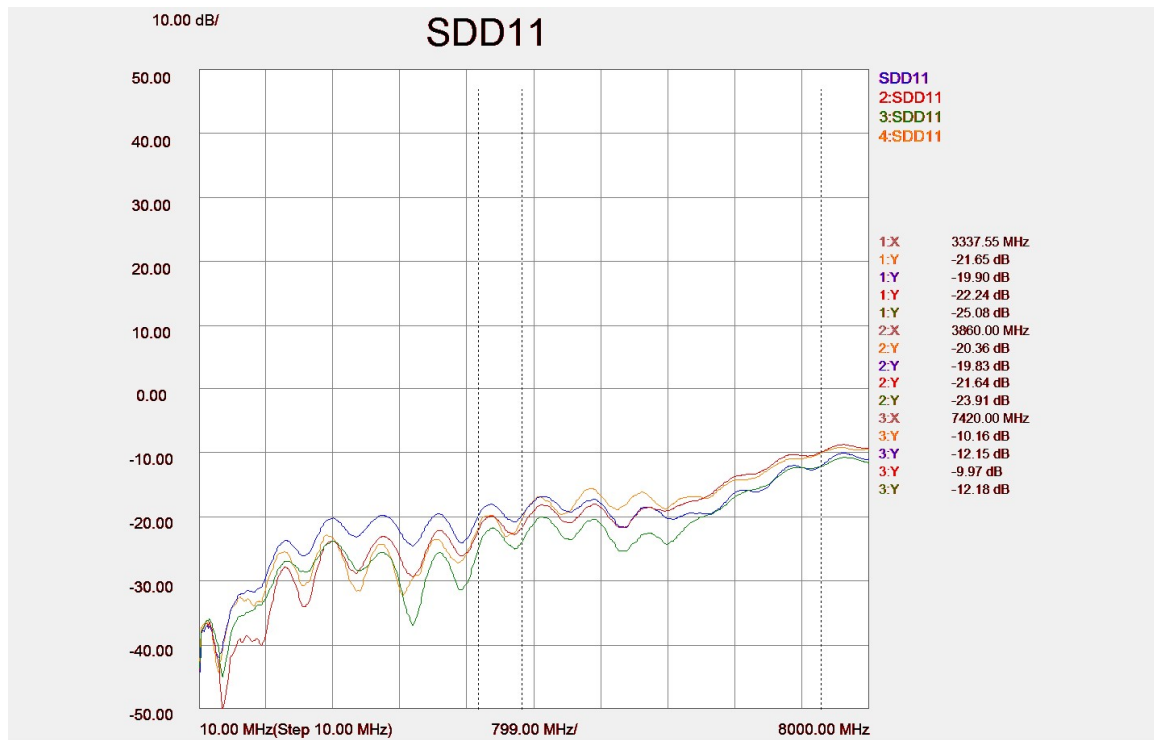
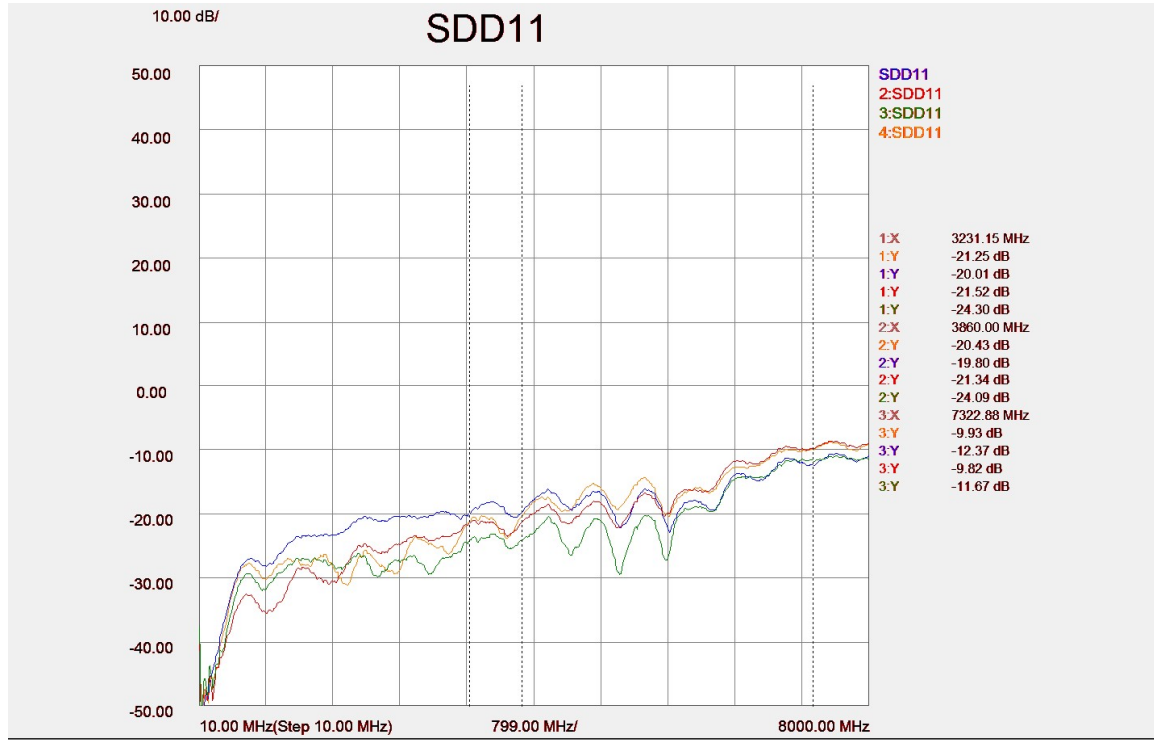


Figure 12. Typical mated pair balanced return loss, with calibration (top) and without calibration (bottom)

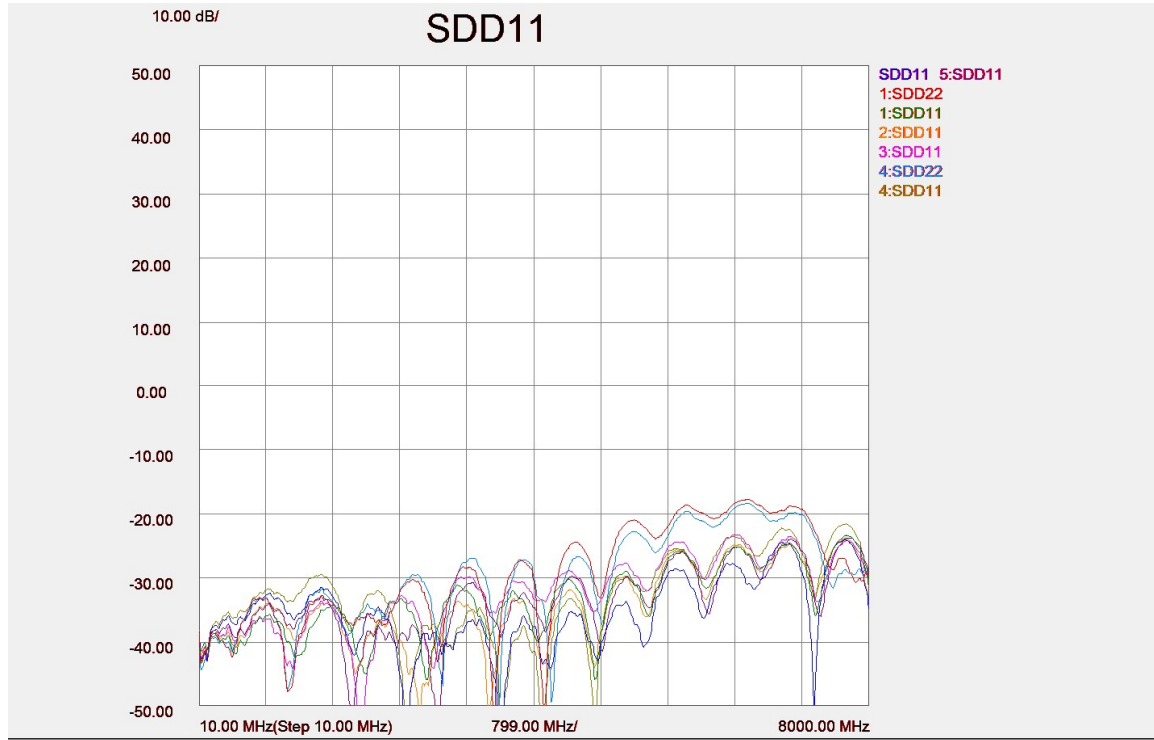


Figure 13. Typical TPA balanced return loss, differential termination replacing connector

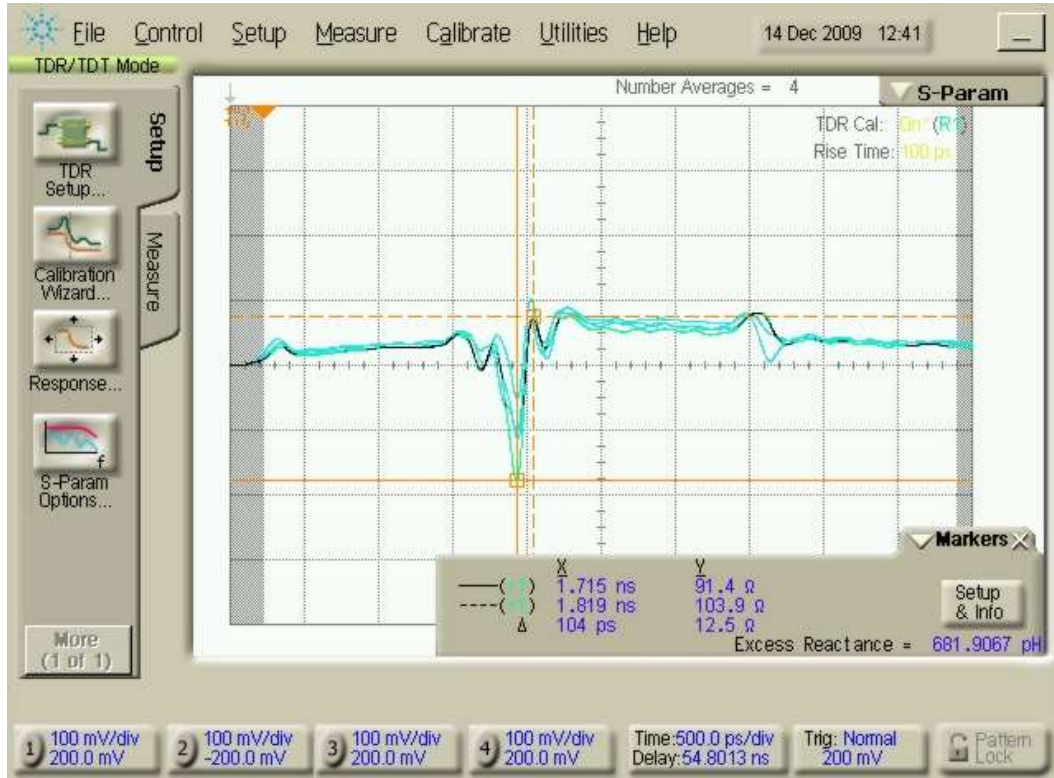


Figure 14. Typical differential TDR of TPA-P connected to TPA-R at 100 ps Rise Time

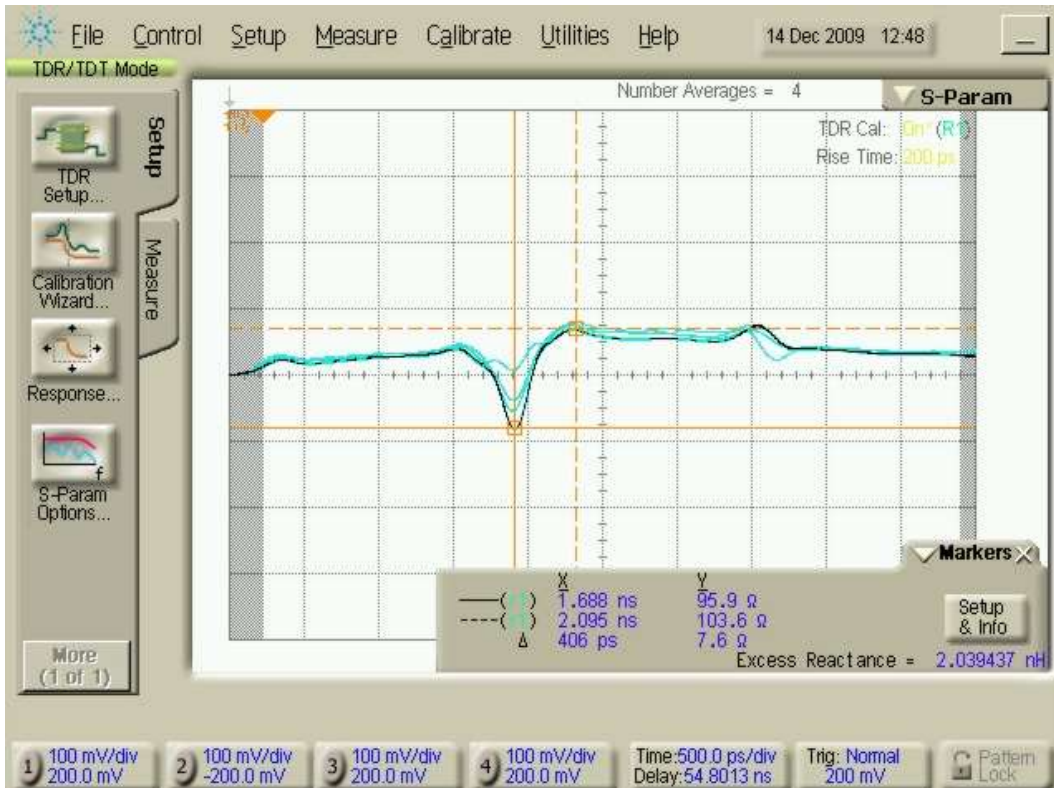


Figure 15. Typical differential TDR of TPA-P connected to TPA-R at 200 ps Rise Time

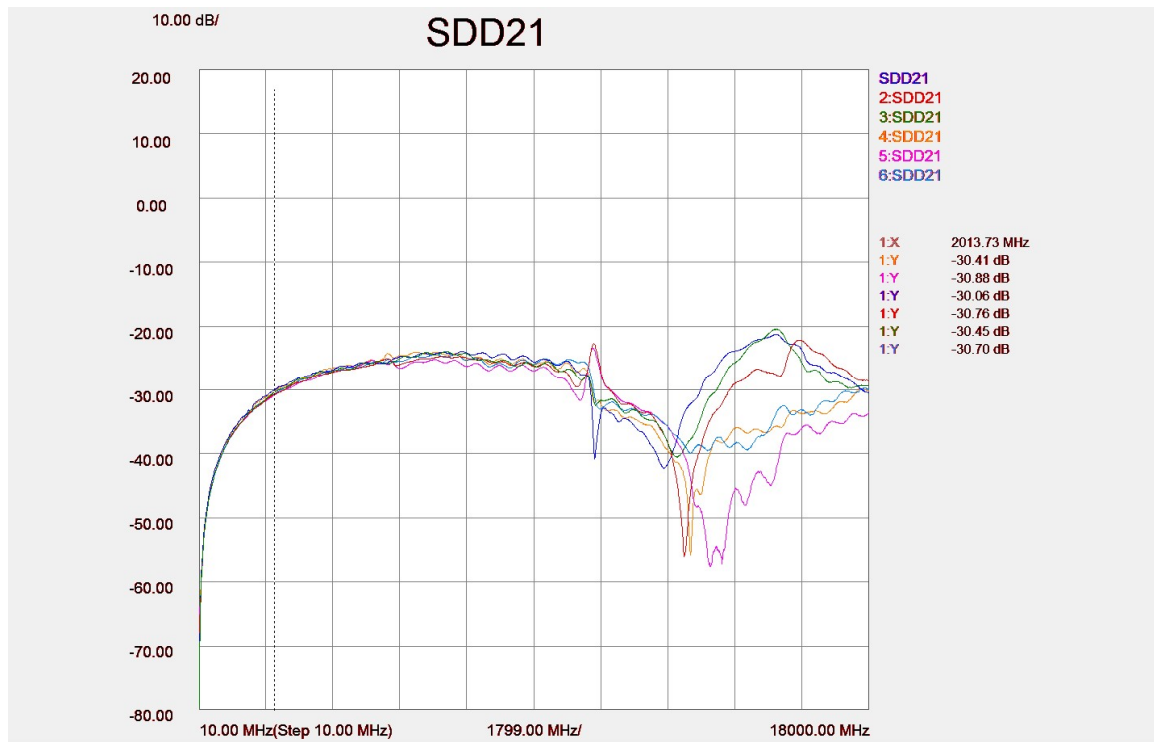
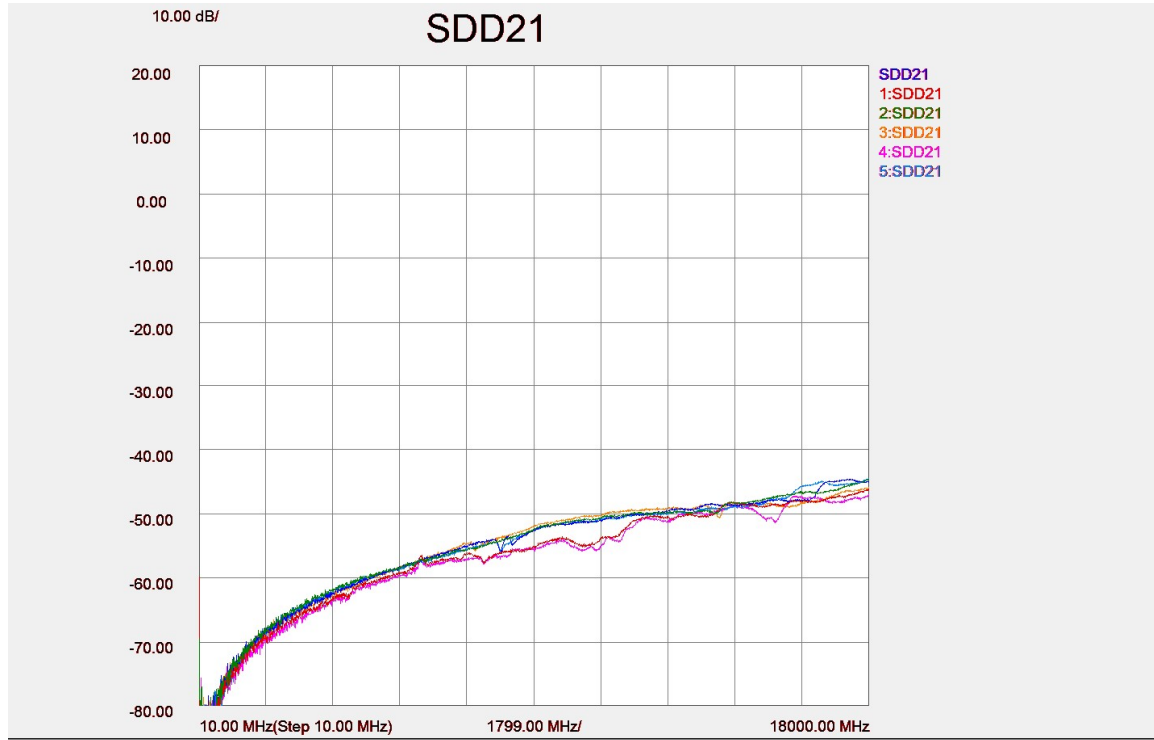


Figure 16. Typical Differential NEXT, without connector (top) and with mated connectors (bottom), adjacent lanes, all lanes terminated at both ends

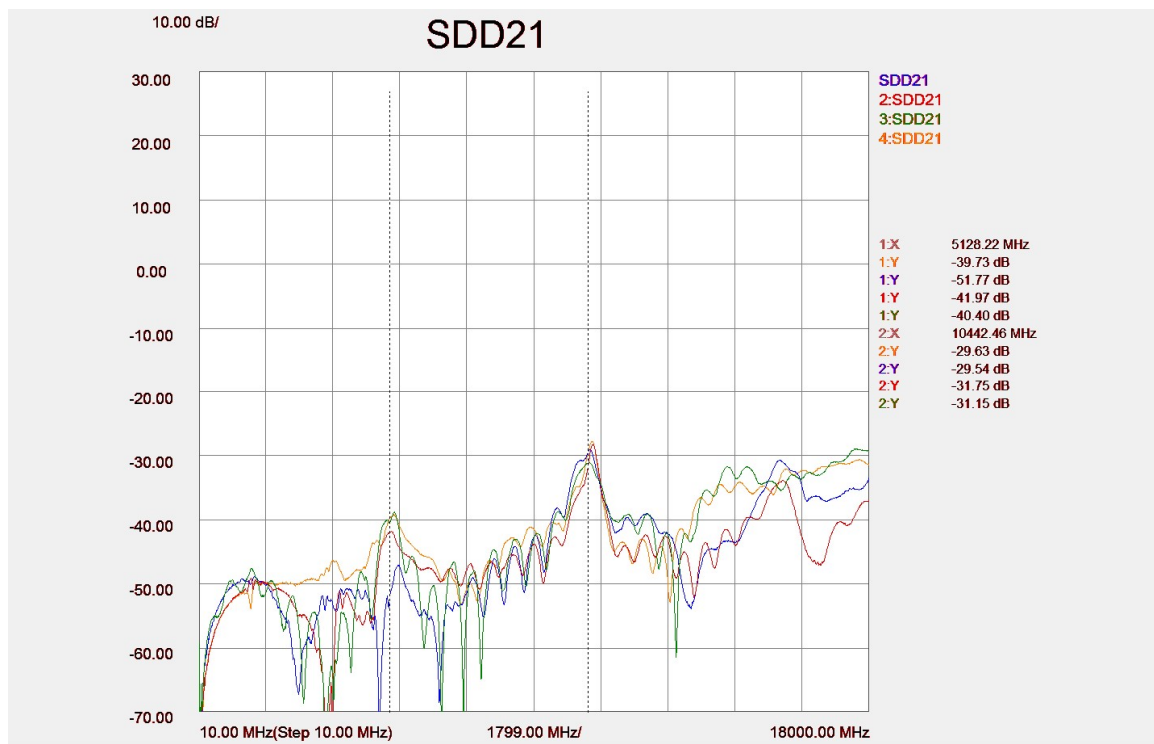
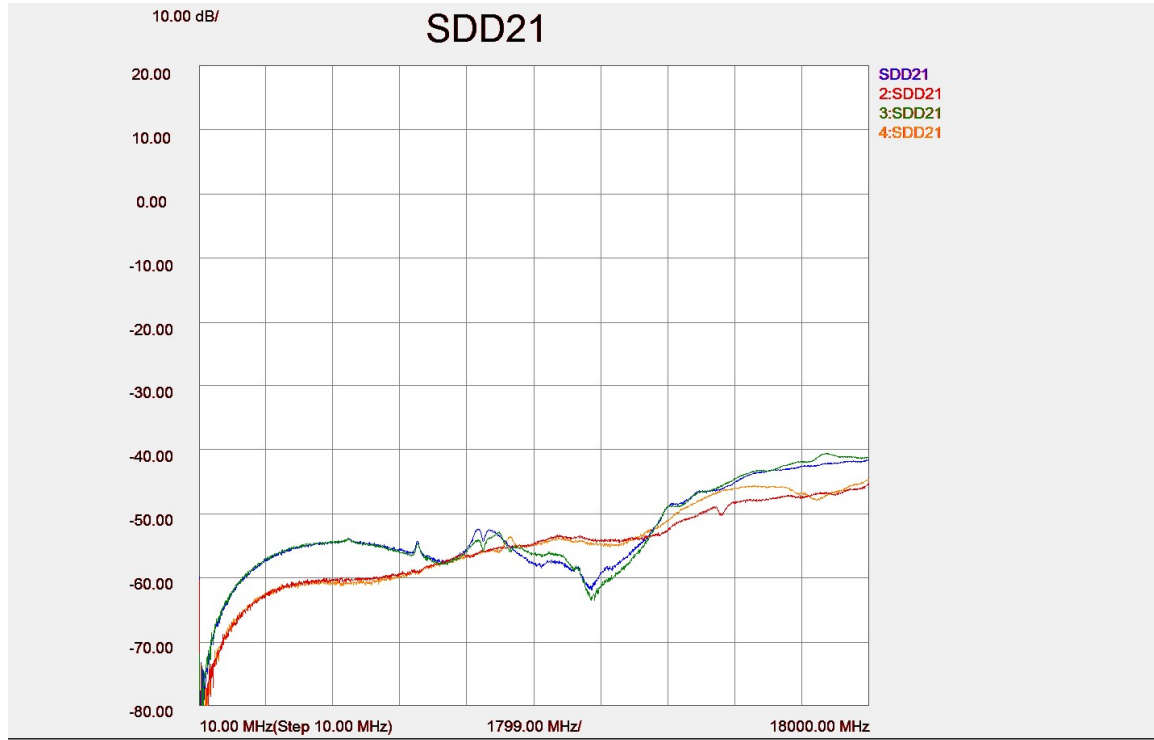


Figure 17. Typical Differential NEXT, without connector (top) and with mated connectors (bottom); skipped lanes, even to even or odd to odd; all lanes terminated at both ends

### Wilder Technologies, LLC – Limited Warranty

WILDER TECHNOLOGIES, LLC, warrants that the item(s) manufactured under the Buyer's contract shall be free from defects in materials and workmanship furnished by WILDER TECHNOLOGIES, LLC, and shall conform to the applicable drawings and specifications.

The warranty period for a Test Adapter is a specified, fixed period commencing on the date of ship from Wilder Technologies, LLC. If you did not purchase your Test Adapter directly from Wilder Technologies, LLC, the serial number and a valid proof of purchase will be required to establish your purchase date. If you do not have a valid proof of purchase, the warranty period will be measured from the date of ship from Wilder Technologies, LLC.

If, during the warranty period, the Test Adapter is not in good working order, Wilder Technologies, LLC will, at its option, repair or replace it at no additional charge, except as is set forth below. In some cases, the replacement Test Adapter may not be new and may have been previously installed. Regardless of the Test Adapter's production status, Wilder Technologies, LLC appropriate warranty terms apply.

#### Consumable and Fragile Material Warranty

Wilder Technologies, LLC warrants that consumable materials and all fragile materials supplied by Wilder Technologies, LLC either as part of an instrument or system, or supplied separately, will be free from defects in material and workmanship at the time of shipment.

#### Extent of Warranty

The warranty does not cover the repair or exchange of a Test Adapter resulting from misuse, accident, modification, unsuitable physical or operating environment, improper maintenance by you, or failure caused by a product for which Wilder Technologies, LLC is not responsible. The warranty is voided by removal or alteration of Test Adapter or parts identification labels. The initial three months are unconditional; the remaining months excludes plugs, receptacles and SMA connectors. Connectors are wear items and excluded from the warranty after the initial three months.

**These warranties are your exclusive warranties and replace all other warranties or conditions, express or implied, including but not limited to, the implied warranties or conditions or merchantability and fitness for a particular purpose. These warranties give you specific legal rights and you may also have other rights which vary from jurisdiction to jurisdiction. Some jurisdictions do not allow the exclusion or limitation of express or implied warranties, so the above exclusion or limitation may not apply to you. In that event, such warranties are limited in duration to the warranty period. No warranties apply after that period.**

#### Items Not Covered by Warranty

Wilder Technologies, LLC does not warrant uninterrupted or error-free operation of a Test Adapter.

Any technical or other support provided for a Test Adapter under warranty, such as assistance via telephone with "how-to" questions and those regarding Test Adapter set-up and installation, will be provided **WITHOUT WARRANTIES OF ANY KIND**.

#### Warranty Service

Warranty service may be obtained from Wilder Technologies, LLC by returning a Wilder Technologies, LLC Returns Material Authorization and the Test Adapter to Wilder Technologies, LLC during the warranty period. To obtain RMA number, contact [support@wilder-tech.com](mailto:support@wilder-tech.com).

You may be required to present proof of purchase or other similar proof of warranty entitlement. You are responsible for any associated transportation charges, duties and insurance between you and Wilder Technologies, LLC. In all instances, you must ship Test Adapters in Wilder Technologies, LLC approved packaging. Information on packaging guidelines can be found at: [www.wilder-tech.com](http://www.wilder-tech.com). Wilder Technologies, LLC will ship repaired or replacement Test Adapter Delivery Duty Prepaid (DDP) and will pay for return shipment. You will receive title to the repaired or replacement Test Adapter and you will be the importer of record.



### Wilder Technologies, LLC – Terms & Conditions of Sale

1. **Other Documents:** This Agreement may NOT be altered, supplemented, or amended by the use of any other document(s) unless otherwise agreed to in a written agreement signed by both you and Wilder Technologies, LLC. If you do not receive an invoice or acknowledgement in the mail, via e-mail, or with your Product, information about your purchase may be obtained at [support@wilder-tech.com](mailto:support@wilder-tech.com) or by contacting your sales representative.
2. **Payment Terms, Orders, Quotes, Interest:** Terms of payment are within Wilder Technologies, LLC's sole discretion, and unless otherwise agreed to by Wilder Technologies, LLC, payment must be received by Wilder Technologies, LLC prior to Wilder Technologies, LLC's acceptance of an order. Payment for the products will be made by credit card, wire transfer, or some other prearranged payment method unless credit terms have been agreed to by Wilder Technologies, LLC. Invoices are due and payable within the time period noted on your invoice, measured from the date of the invoice. Wilder Technologies, LLC may invoice parts of an order separately. Your order is subject to cancellation by Wilder Technologies, LLC, in Wilder Technologies, LLC's sole discretion. Unless you and Wilder Technologies, LLC have agreed to a different discount, Wilder Technologies, LLC's standard pricing policy for Wilder Technologies, LLC-branded systems, which includes hardware, software and services in one discounted price, allocates the discount off list price applicable to the service portion of the system to be equal to the overall calculated percentage discount off list price on the entire system. Wilder Technologies, LLC is not responsible for pricing, typographical, or other errors in any offer by Wilder Technologies, LLC and reserves the right to cancel any orders resulting from such errors.
3. **Shipping Charges; Taxes; Title; Risk of Loss:** Shipping, handling, duties and tariffs are additional unless otherwise expressly indicated at the time of sale. Title to products passes from Wilder Technologies, LLC to Customer on shipment from Wilder Technologies, LLC's facility. Loss or damage that occurs during shipping by a carrier selected by Wilder Technologies, LLC is Wilder Technologies, LLC's responsibility. Loss or damage that occurs during shipping by a carrier selected by you is your responsibility. You must notify Wilder Technologies, LLC within 7 days of the date of your invoice or acknowledgement if you believe any part of your purchase is missing, wrong or damaged. Unless you provide Wilder Technologies, LLC with a valid and correct tax exemption certificate applicable to your purchase of Product and the Product ship-to location, you are responsible for sales and other taxes associated with the order. **Shipping dates are estimates only.**
4. **WARRANTY:** WILDER TECHNOLOGIES, LLC, warrants that the item(s) manufactured under the Buyer's contract shall be free from defects in materials and workmanship furnished by WILDER TECHNOLOGIES, LLC, and shall conform to the applicable drawings and specifications. WILDER TECHNOLOGIES, LLC'S liability herein, for breach of warranty, contract or negligence in manufacturing, shall be limited to repair or replacement. Repair or replacement of defective items will be applicable only if the Buyer notifies WILDER TECHNOLOGIES, LLC, by written notice within 30-days of delivery. All claims shall be addressed to: [support@wilder-tech.com](mailto:support@wilder-tech.com) or WILDER TECHNOLOGIES, LLC, 6101A East 18th Street, Vancouver, Washington 98661 U.S.A.; ATTENTION: Customer Service Manager. WILDER TECHNOLOGIES, LLC, reserves the right to inspect at the Buyer's plant all items claimed to be defective or nonconforming prior to authorizing their return. WILDER TECHNOLOGIES, LLC, assumes no liability for the results of the use of its components in conjunction with other electric, electronic or mechanical components, circuits and/or systems. The foregoing constitutes the sole and exclusive remedy of the Buyer and the exclusive liability of WILDER TECHNOLOGIES, LLC, and is IN LIEU OF ANY AND ALL OTHER WARRANTIES, STATUTORY, IMPLIED OR EXPRESSED AS TO MERCHANTABILITY, FITNESS FOR THE PURPOSE SOLD, DESCRIPTION, QUALITY, and PRODUCTIVENESS OR ANY OTHER MATTER. Without limiting the foregoing, in no event shall WILDER TECHNOLOGIES, LLC, be liable for loss of use, profit or other collateral, or for special and/or consequential damages.
5. **RETURNED GOODS:** WILDER TECHNOLOGIES, LLC, will accept only those goods for return that have been authorized for return. All goods authorized for return shall be assigned a Returned Material Authorization (RMA) Number. The RMA Number shall be clearly marked on the shipping container(s) and all documentation accompanying the goods authorized for return. The RMA Number shall be assigned by WILDER TECHNOLOGIES, LLC pursuant to the conditions set forth in Paragraph 4, WARRANTY.
6. **UNITED STATES GOVERNMENT CONTRACTS:** In the event this offer is accepted under Government contract, WILDER TECHNOLOGIES, LLC, agrees to accept clauses required by Government regulations and to waive WILDER TECHNOLOGIES, LLC conditions inconsistent therewith. WILDER TECHNOLOGIES, LLC, certifies that it is a regular manufacturer or dealer of the goods and/or services offered herein and that the prices offered do not exceed those charged to any customer for like quantities, services or materials under the same conditions.

### Compliance with Environmental Legislation

Wilder Technologies, LLC, is dedicated to complying with the requirements of all applicable environmental legislation and regulations, including appropriate recycling and/or disposal of our products.



### WEEE Compliance Statement

The European Union adopted Directive 2002/96/EC on Waste Electrical and Electronic Equipment (WEEE), with requirements that went into effect August 13, 2005. WEEE is intended to reduce the disposal of waste from electrical and electronic equipment by establishing guidelines for prevention, reuse, recycling and recovery.

Wilder Technologies has practices and processes in place to conform to the requirements in this important Directive.

In support of our environmental goals, effective January 1<sup>st</sup>, 2009 Wilder Technologies, LLC has partnered with EG Metals Inc. – Metal and Electronics Recycling of Hillsboro, Oregon, [www.egmetalrecycling.com](http://www.egmetalrecycling.com), to recycle our obsolete and electronic waste in accordance with the European Union Directive 2002/96/EC on waste electrical and electronic equipment ("WEEE Directive").

As a service to our customers, Wilder Technologies is also available for managing the proper recycling and/or disposal of all Wilder Technologies products that have reached the end of their useful life. For further information and return instructions, contact [support@wilder-tech.com](mailto:support@wilder-tech.com).



### Compliance to RoHS 2 Substance Restrictions

Wilder Technologies, LLC certifies that the parts described in this document are compliant to the substance restrictions of Directive 2011/65/EU and Amendment Directive (EU) 2015/863 of the European Parliament, and of the Council of 8 June, 2011 and 31 March, 2015 on the restriction of the use of certain hazardous substances in electrical and electronic equipment (RoHS 2 Directive), prohibiting the use in homogeneous materials in excess of the listed maximum concentration value, except in cases where use is allowed by applicable exemptions listed in Annex III and Annex IV of the Directive.

Compliance with RoHS 2 has been verified through internal controls at design and production sites, including establishment of processes for specifying and controlling materials and segregation of non-compliant parts, receipt of supplier declarations of compliance and/or analytical test.



## Glossary of Terms

TERMINOLOGY	DEFINITION
Aggressor	A signal imposed on a system (i.e., cable assembly) to measure response on other signal carriers.
ARC	Audio Return Channel, used to send an audio stream from the sink to the source or repeater.
Box-to-box connection	HDMI Type-A link between two boxes detachable by an end user. An HDMI Type-A cable-connector assembly for the box-to-box connection shall have three TMDS Link lanes.
CEC	Consumer Electronics Control
DDC	Display Data Channel (VESA)
HDMI Ethernet	HDMI Ethernet provides a full duplex connection between HDMI devices which conforms to 100Base-TX IEEE 802.3 standard [4n].
HDMI Type-A Receiver	Circuitry that receives the incoming HDMI Type-A TMDS Link data. Located in Sink Device and the upstream port of Intermediate Device.
HDMI Type-A Transmitter	Circuitry that transmits the HDMI Type-A TMDS Link data located in Source Device and in the downstream port of Intermediate Device.
HDMI-TPA	HDMI Type-A Test Point Access. A specialized assembly that interfaces to a HDMI Type-A receptacle or plug and enables access of signals for measurement or stimulation.
Dual-standard Device Source or Sink	Device that supports both DisplayPort and DVI/HDMI operating modes.
Informative	The designation of a test that is not required for compliance but is considered important from a characterization standpoint. It is provided for informational purposes only.
Normative	The designation of a test that is required for compliance.
Sink Device	A device that contains A/V stream sinks for display and/or sound.
Source Device	A device that contains a stream source and originates an isochronous A/V stream.
TMDS	Transition Minimized Differential Signaling
Victim	A signal carrier on a system that has a response imposed on it by other signals in the system.

## E-EDID Addendum A-1

This addendum provides documentation of E-EDID/Low Frequency Control Board (HDMI-TPA-E) as to its content and operation. It also contains documentation of the provided EE-PROM which may or may not be used in the course of the testing.

### E-EDID/Low Frequency Control Board reference information

This section contains an illustration of the E-EDID/Low Frequency Control Board, the schematic, primary cable attachment detail, secondary cable attachment for probing and/or HDCP signal injection, and specification of the E-EDID/Low Frequency Control Board.

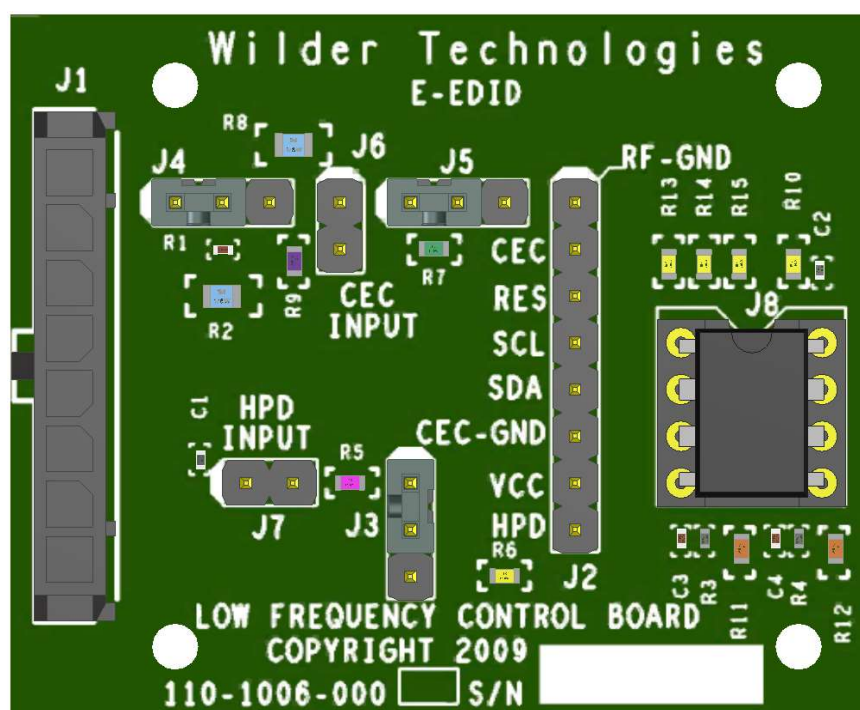
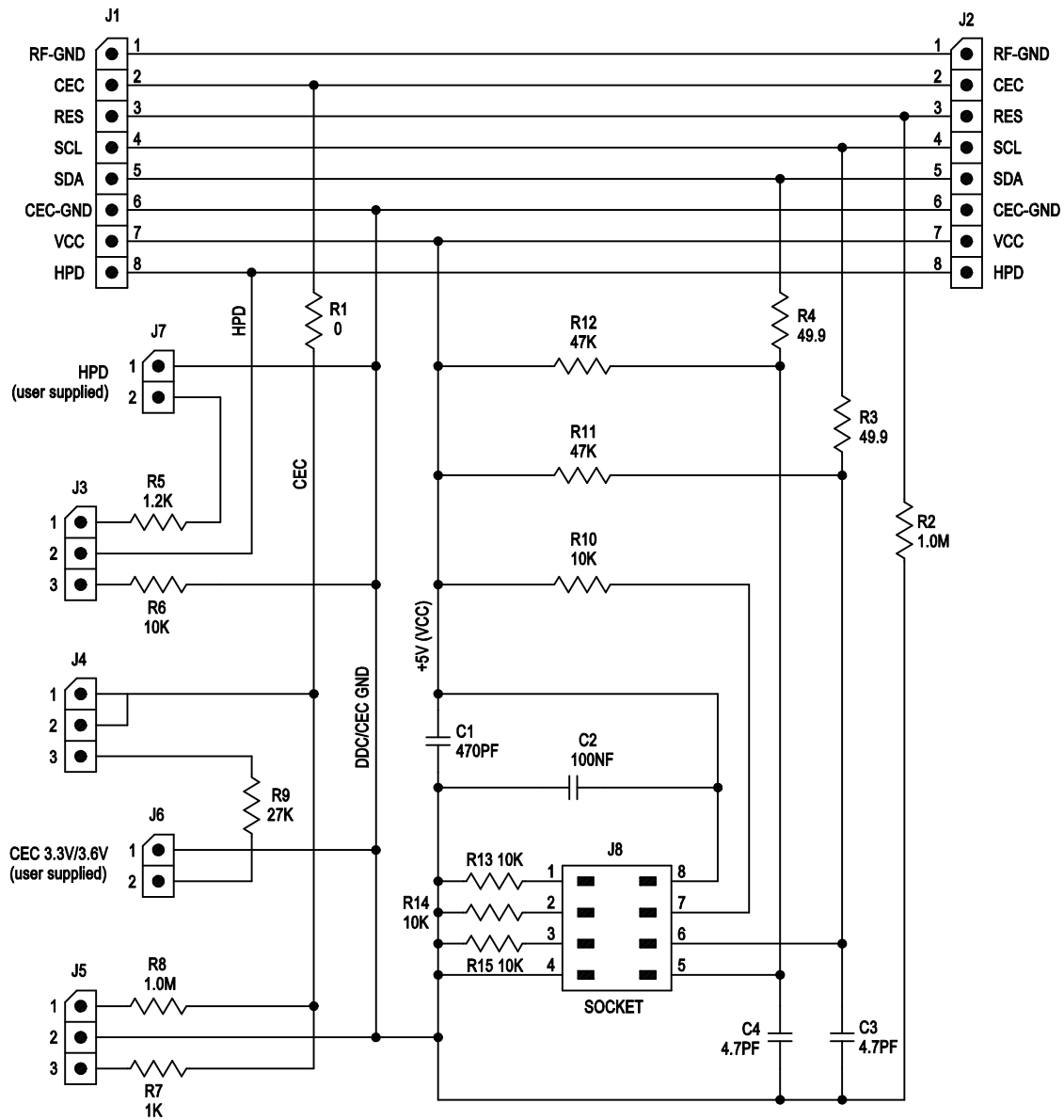


Figure A-1. E-EDID/Low Frequency Control Board

The previous figure shows the E-EDID/Low Frequency Control Board.

- J1 is the primary attachment point for the low speed signals from the HDMI-TPA.
- J2 is the secondary attachment point for probing or for injecting HDCP signals.
- J3 is the HPD grounding connection.
- J4 is CEC switching connection.
- J5 is CEC grounding connection.
- J6 is the Power and return input for CEC.
- J7 is the Power and return input for HPD.
- J8 is the socket for the E-EDID EE-PROM.



### Figure A-2. E-EDID/Low Frequency Control Board Schematic

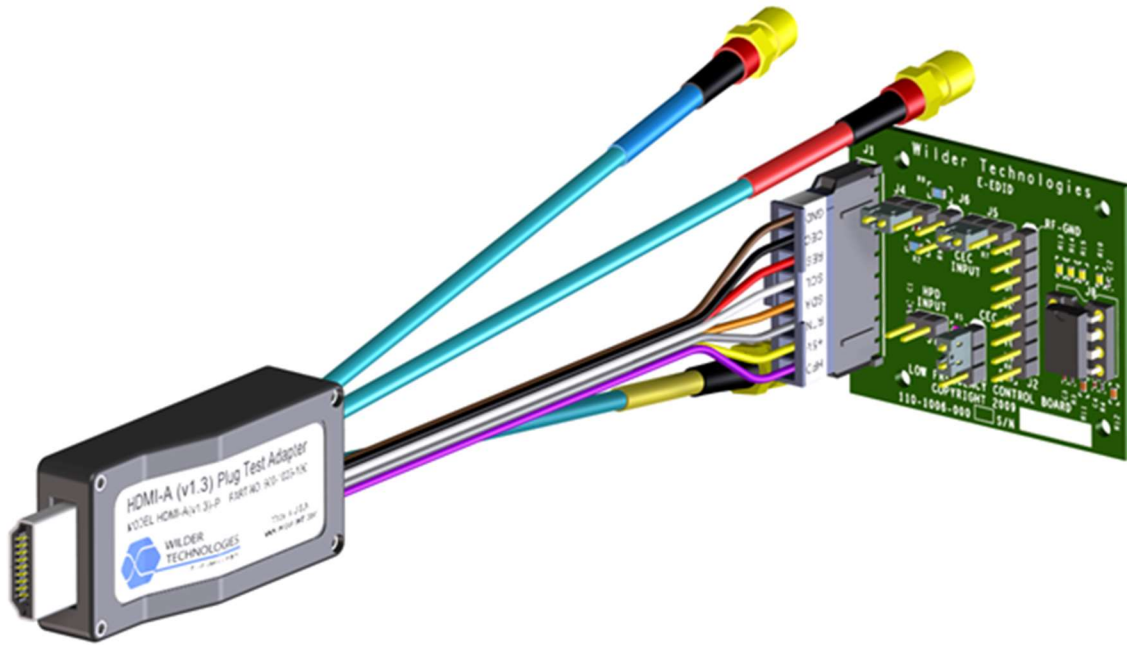


Figure A-3. E-EDID/Low Frequency Control Board attached to a HDMI-TPA Plug

Table A-1. E-EDID/Low Frequency Control Board Electrical Specifications

SPECIFICATION	MINIMUM	TYPICAL	MAXIMUM	NOTES
Vcc (V)	2.5	5.0	5.5	Required by EE-PROM
Icc (mA)			5.3	With EE-PROM, SDA = SDC = 0V
HPD current (mA), Vhpd = 3.3V			3.1	
CEC current (uA), Vcec = 3.3V			136	

### E-EDID/Low Frequency Control Board User Model

This section documents using an external power supply for HPD and CEC, the use of the HPD and CEC circuitry for testing, and source testing of the E-EDID per the CTS. This board DOES NOT support HDMI Ethernet or ARC functionality. Most tests require interaction with the E-EDID to setup the HDMI protocol to the necessary state for testing.

---

**NOTE: The E-EDID/Low Frequency Control Board does not provide for testing HDCP functionality. An external data generator must be used to test this functionality.**

---

The following are examples of tests that are from the CTS. They are included to explain the operation of the E-EDID/Low Frequency Control Board. They are not meant to replace the most recent version of the CTS. Please follow the requirements of the most recent version of the CTS.

Within the HDMI Compliance Test Specification Version 1.4, HPD testing is performed as follows:

- For Cable testing, the HPD test is TEST ID 5-12: HPD Detect signal. Two E-EDID/Low Frequency Control Boards can be used to connect Power on the Source side connector and to measure HPD at the Sink connector. No EEPROM is required for this test.
- For Source testing TEST ID 7-12: Hot Plug Detect.
- For Sink testing TEST ID 8-10: HPD Output Voltage and TEST ID 8-11: HPD Output Resistance.

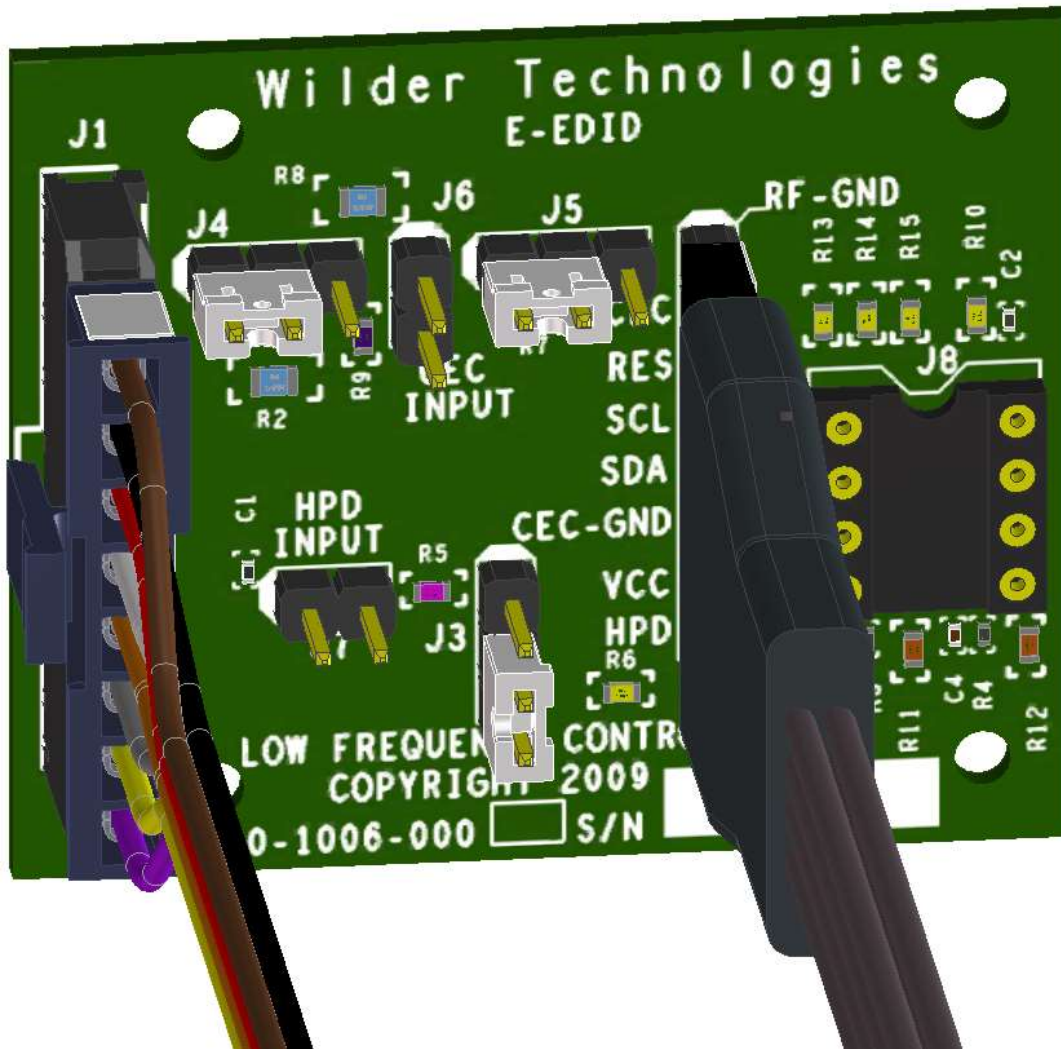


Figure A-4. E-EDID/Low Frequency Control Board connected for sink testing

Note that the jumper J3 is connecting pins 2 to 3, this is the sink testing position for HPD. Also note that power is connected between VCC and CEC GND of the secondary connector. Exercise caution in setting the correct polarity of this power supply. In addition, the secondary connector, J2, signal SCL is used to clock out the DDC data on SDA.

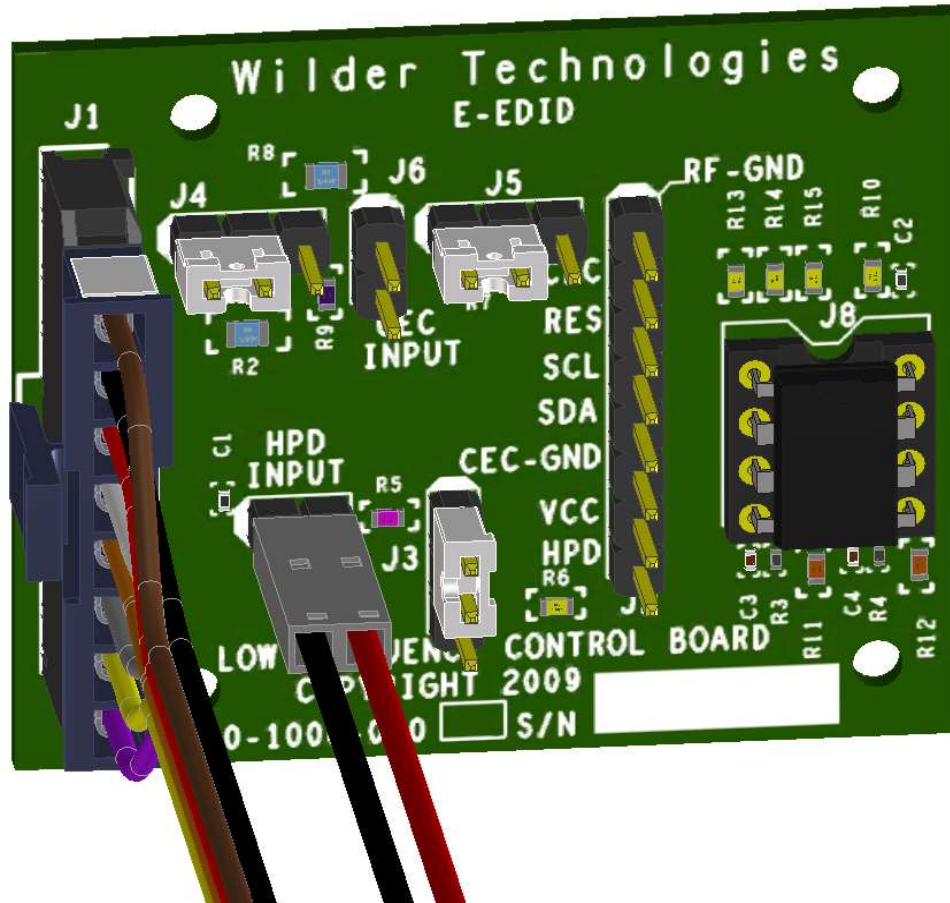


Figure A-5. E-EDID/Low Frequency Control Board connected for source testing

Note that the jumper J3 is connecting pin 1 to 2, this is the source testing position for HPD. Also note that HPD power is connected to J7. Exercise caution in setting the correct polarity of this power supply. J7-1 is DDC/CEC ground and J7-2 is the HPD power source. The power supply connected to HPD input is adjusted during the course of the testing.

The E-EDID/Low Frequency Control Board has been designed to include the functionality of the TPA-CEC-R - Quiescent CEC Electrical Test Fixture.

Within the HDMI Compliance Test Specification Version 1.4, CEC testing is performed as follows:

- For Cable testing, TEST ID 5-14: CEC communication.
- For Source testing TEST ID 7-15: CEC Line regulation. CEC voltage measurements are taken with 1 Meg Ohm load to CEC GND, with 3.3V through 27k Ohms, with 1k Ohm load to CEC GND, with the divider created between the 3.3V 27k Ohms, and with the 1k Ohm to CEC GND. And then the current with 3.63V through the 27k Ohms.
- For Sink testing TEST ID 8-14: CEC Line Degradation. CEC voltage measurements are taken with 1 Meg Ohm load to CEC GND, with 3.3V through 27k Ohms, with 1k Ohm load to CEC GND, with the divider created between the 3.3V 27k Ohms, and with the 1k Ohm to CEC GND. And then the current with 3.63V through the 27k Ohms.



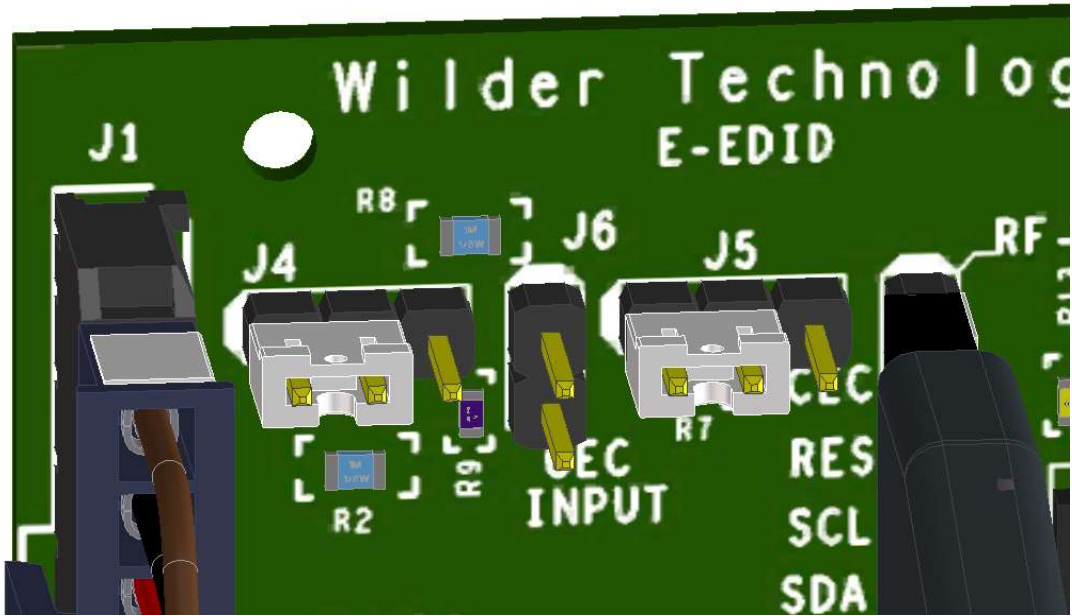


Figure A-6. Jumper positions that connect CEC with a 1 Meg Ohm resistor to DDC/CEC ground on the E-EDID/Low Frequency Control Board.

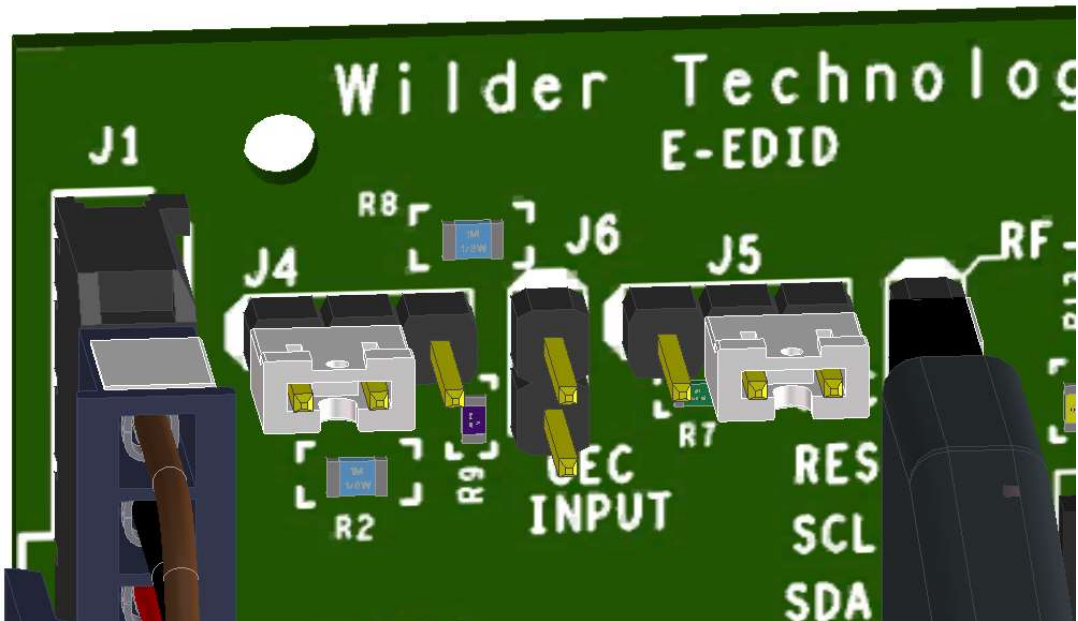


Figure A-7. Jumper positions that connect CEC with a 1k Ohm resistor to DDC/CEC ground on the E-EDID/Low Frequency Control Board.



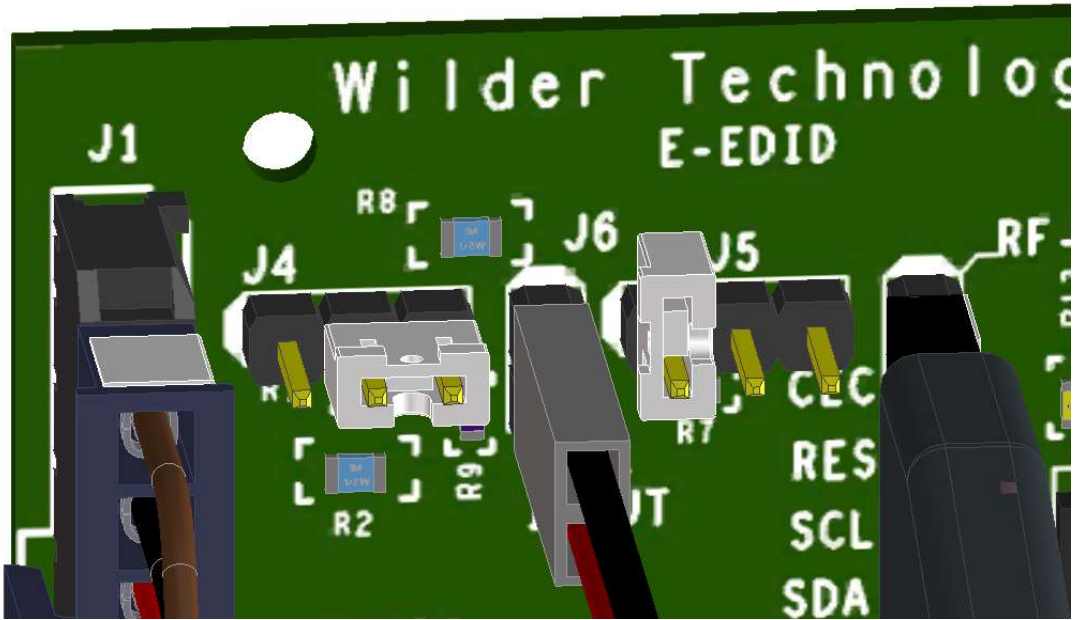


Figure A-8. Jumper positions for CEC power through the 27k Ohm resistor on the E-EDID/Low Frequency Control Board.

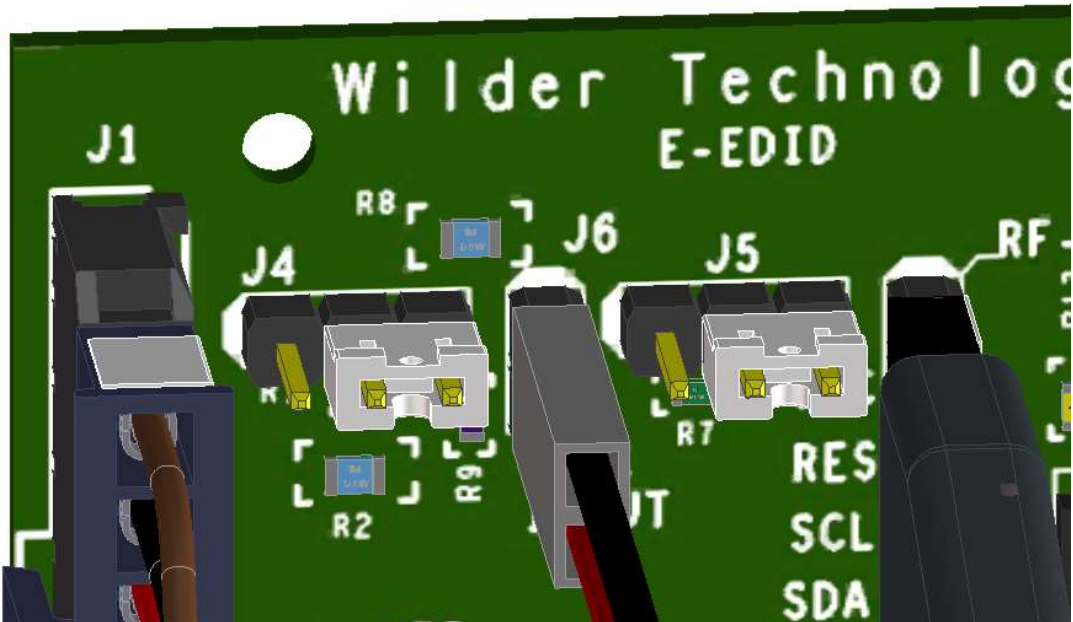


Figure A-9. Jumper positions for CEC power through the 27k Ohm resistor and 1k Ohm resistor to DDC/CEC ground on the E-EDID/Low Frequency Control Board.

## E-EDID EE-PROM

Table A-2. E-EDID EE-PROM Memory Map:

	0	1	2	3	4	5	6	7	8	9	A	B	C	D	E	F
00:	00	FF	FF	FF	FF	FF	FF	00	5E	8C	01	00	05	00	00	00
10:	1A	14	01	03	80	50	2D	78	E2	0D	C9	A0	57	47	98	27
20:	12	48	4C	20	00	00	01	01	01	01	01	01	01	01	01	01
30:	01	01	01	01	01	01	04	74	80	18	71	38	2D	40	58	2C
40:	45	00	C4	8E	21	00	00	1E	02	3A	80	18	71	38	2D	40
50:	58	2C	45	00	C4	8E	21	00	00	1E	00	00	00	FC	00	48
60:	44	4D	49	20	54	50	41	0A	20	20	20	20	00	00	00	FD
70:	03	01	FF	01	FF	22	00	0A	20	20	20	20	20	20	01	86

## Block 0

	0	1	2	3	4	5	6	7	8	9	A	B	C	D	E	F
00:	02	03	72	71	83	4F	00	00	73	03	0C	00	10	00	38	44
10:	20	A0	85	01	02	03	04	01	3F	43	45	40	32	0F	7F	07
20:	17	7F	FF	3F	7F	FF	57	7F	00	5F	7F	01	67	7F	00	5F
30:	BF	40	3E	3D	3C	3B	3A	39	38	37	36	35	34	33	32	31
40:	30	2F	2E	2D	2C	2B	2A	29	28	27	26	25	24	23	22	5F
50:	21	20	1F	1E	1D	1C	1B	1A	19	18	17	16	15	14	13	12
60:	11	10	0F	0E	0D	0C	0B	0A	09	08	07	06	05	04	03	42
70:	02	01	00	00	00	00	00	00	00	00	00	00	00	00	00	8D

## Block 1

Product ID:

- Manufacturer: WTL
- Model ID: 1
- Serial Number: 5
- Week Made: 26
- Year Made: 2010

EDID Structure:

- EDID Version: 1
- EDID Revision: 3

### Video Input Definitions:

- Signal type: Digital
- VESA DFP 1.x default: Not Compatible
- Max Horz Size (in cm): 80
- Max Vert Size (in cm): 45
- Gamma Value: 2.2

### Features:

- Standby Mode: Supported
- Suspend Mode: Supported
- Active Off Mode: Supported
- Monochrome display
- sRGB is not used as default
- Preferred Timing is native
- Display is non-continuous frequency (multi-mode)

### Chromaticity:

- Red\_x: 0.625
- Red\_y: 0.3439
- Green\_x: 0.280
- Green\_y: 0.594
- Blue\_x: 0.155
- Blue\_y: 0.070
- White\_x: 0.283
- White\_y: 0.297

### Established Timing 1:

- 640 x 480 @ 60Hz DMT0660

### Established Timing 2:

- None

### Manufacturer's Timing's:

- None

### Standard Timing 1:

- Unused

### Standard Timing 2:

- Unused

### Standard Timing 3:

- Unused

### Standard Timing 4:

- Unused

Standard Timing 5:

- Unused

Standard Timing 6:

- Unused

Standard Timing 7:

- Unused

Standard Timing 8:

- Unused

Preferred Native Descriptor 1:

- Pixel clock (MHz): 297.000
- Horizontal active (pixels): 1920
- Vertical active (lines): 1080
- Horizontal blanking (pixels): 280
- Vertical blanking (lines): 45
- Horizontal Sync Delay (pixels): 88
- Horizontal Sync pulse width (pixels): 44
- Vertical Sync Delay (lines): 4
- Vertical Sync pulse width (lines): 5
- Horizontal image size (mm): 708
- Vertical image size (mm): 398
- Border : 0 pixels x 0 lines
- Scanning mode: Progressive
- Stereo: Normal display, no stereo
- Sync. mode: Digital Separate, VSYNC polarity +, HSYNC polarity +.

Descriptor 2:

- Pixel clock (MHz): 148.500
- Horizontal active (pixels): 1920
- Vertical active (lines): 1080
- Horizontal blanking (pixels): 280
- Vertical blanking (lines): 45
- Horizontal Sync Delay (pixels): 88
- Horizontal Sync pulse width (pixels): 44
- Vertical Sync Delay (lines): 4
- Vertical Sync pulse width (lines): 5
- Horizontal image size (mm): 708
- Vertical image size (mm): 398
- Border : 0 pixels x 0 lines
- Scanning mode: Progressive
- Stereo: Normal display, no stereo
- Sync. mode: Digital Separate, VSYNC polarity +, HSYNC polarity +.

Display Product Name (ASCII):

- Monitor name: HDMI TPA

Display Range Limits Descriptor:

- Min. vertical rate (Hz): 256
- Max vertical rate (Hz): 510
- Min. horizontal rate (kHz): 1
- Max, horizontal rate (kHz): 255
- Max. clock rate (MHz): 340

Timing Extension:

- Tag: 2
- Revision: 3

Monitor Support:

- Underscan: Not supported
- Basic audio: Supported
- RGB and YCbCr444: Supported
- RGB and YCbCr422: Supported

Data Block Collection:

**Audio data block:**

- Audio format code: Linear PCM (e.g., IEC60958)
- Maximum number of channels: 8
- Sampling frequency (kHz): 32, 44.1, 48, 88.2, 96, 176.4, 192
- Number of bits per sample: 16 bits, 20 bits, 24 bits
- Audio format code: AC-3
- Maximum number of channels: 8
- Sampling frequency (kHz): 32, 44.1, 48, 88.2, 96, 176.4, 192
- Maximum bit rate: 2040 kbps
- Audio format code: DTS
- Maximum number of channels: 8
- Sampling frequency (kHz): 32, 44.1, 48, 88.2, 96, 176.4, 192
- Maximum bit rate: 2040 kbps
- Audio format code: Dolby Digital +
- Maximum number of channels: 8
- Sampling frequency (kHz): 32, 44.1, 48, 88.2, 96, 176.4, 192
- Audio format code: DTS-HD
- Maximum number of channels: 8
- Sampling frequency (kHz): 32, 44.1, 48, 88.2, 96, 176.4, 192
- Audio format code: MAT (MLP)
- Maximum number of channels: 8
- Sampling frequency (kHz): 32, 44.1, 48, 88.2, 96, 176.4, 192

**Video data block:**

- VIC = 63, 1920 x 1080 p 119.88/120Hz 16:9 Native
- VIC = 64, 1920 x 1080 p 100Hz 16:9
- VIC = 62, 1280 x 720 p 29.97/30Hz 16:9
- VIC = 61, 1280 x 720 p 25Hz 16:9

- VIC = 60, 1280 x 720 p 23.97/24Hz 16:9
- VIC = 59, 720(1440) x 480 i 239.76/240Hz 16:9
- VIC = 58, 720(1440) x 480 i 239.76/240Hz 4:3
- VIC = 57, 720 x 480 p 239.76/240Hz 16:9
- VIC = 56, 720 x 480 p 239.76/240Hz 4:3
- VIC = 55, 720(1440) x 576 i 200Hz 16:9
- VIC = 54, 720(1440) x 576 i 200Hz 4:3
- VIC = 53, 720 x 576 p 200Hz 16:9
- VIC = 52, 720 x 576 p 200Hz 4:3
- VIC = 51, 720(1440) x 480 i 119.88/120Hz 16:9
- VIC = 50, 720(1440) x 480 i 119.88/120Hz 4:3
- VIC = 49, 720 x 480 p 119.88/120Hz 16:9
- VIC = 48, 720 x 480 p 119.88/120Hz 4:3
- VIC = 47, 1280 x 720 p 119.88/120Hz 16:9
- VIC = 46, 1920 x 1080 i 119.88/120Hz 16:9
- VIC = 45, 720(1440) x 576 i 100Hz 16:9
- VIC = 44, 720(1440) x 576 i 100Hz 4:3
- VIC = 43, 720 x 576 p 100Hz 16:9
- VIC = 42, 720 x 576 p 100Hz 4:3
- VIC = 41, 1280 x 720 p 100Hz 16:9
- VIC = 40, 1920 x 1080 i 100Hz 16:9
- VIC = 39, 1920 x 1080 i 50Hz 16:9
- VIC = 38, 2880 x 576 p 50Hz 16:9
- VIC = 37, 2880 x 576 p 50Hz 4:3
- VIC = 36, 2880 x 480 p 59.94/60Hz 16:9
- VIC = 35, 2880 x 480 p 59.94/60Hz 4:3
- VIC = 34, 1920 x 1080 p 29.97/30Hz 16:9
- VIC = 33, 1920 x 1080 p 25Hz 16:9
- VIC = 32, 1920 x 1080 p 23.97/24Hz 16:9
- VIC = 31, 1920 x 1080 p 50Hz 16:9
- VIC = 30, 1440 x 576 p 50Hz 16:9
- VIC = 29, 1440 x 576 p 50Hz 4:3
- VIC = 28, (2880) x 288 p 50Hz 16:9
- VIC = 27, (2880) x 288 p 50Hz 4:3
- VIC = 26, (2880) x 576 i 50Hz 16:9
- VIC = 25, (2880) x 576 i 50Hz 4:3
- VIC = 24, 720(1440) x 288 p 50Hz 16:9
- VIC = 23, 720(1440) x 288 p 50Hz 4:3
- VIC = 22, 720(1440) x 576 i 50Hz 16:9
- VIC = 21, 720(1440) x 576 i 50Hz 4:3
- VIC = 20, 1920 x 1080 i 50Hz 16:9
- VIC = 19, 1280 x 720 p 50Hz 16:9
- VIC = 18, 720 x 576 p 50Hz 16:9
- VIC = 17, 720 x 576 p 50Hz 4:3
- VIC = 16, 1920 x 1080 p 59.94/60Hz 16:9
- VIC = 15, 1440 x 480 p 59.94/60Hz 16:9
- VIC = 14, 1440 x 480 p 59.94/60Hz 4:3
- VIC = 13, (2880) x 240 p 59.94/60Hz 16:9
- VIC = 12, (2880) x 240 p 59.94/60Hz 4:3
- VIC = 11, (2880) x 480 i 59.94/60Hz 16:9

- VIC = 10, (2880) x 480 i 59.94/60Hz 4:3
- VIC = 9, 720(1440) x 240 p 59.94/60Hz 16:9
- VIC = 8, 720(1440) x 240 p 59.94/60Hz 4:3
- VIC = 7, 720(1440) x 480 i 59.94/60Hz 16:9
- VIC = 6, 720(1440) x 480 i 59.94/60Hz 4:3
- VIC = 5, 1920 x 1080 i 59.94/60Hz 16:9
- VIC = 4, 1280 x 720 p 59.94/60Hz 16:9
- VIC = 3, 720 x 480 p 59.94/60Hz 16:9
- VIC = 2, 720 x 480 p 59.94/60Hz 4:3
- VIC = 1, 640 x 480 p 59.94/60Hz 4:3

**Speaker allocation data block:**

- RLC/RRC RL/RR FC LFE FL/FR

**Vendor specific data block:**

- IEEE registration ID: 0x000C03
- Data block payload: CEC PA 1.0.0.0, 36-bit, 30-bit, deep YCbCr 4:4:4, DVI dual-link not supported
- max TMDS clk: 340 MHz,
- Content Types: None, Latency: Not Present, Interlaced Latency: Not Present
- 3D present (HDMI\_3D\_LEN = 5), Image Size: no additional information
- 4K x 2K Support: 3840x2160 30Hz, 3840x2160 25Hz, 3840x2160 24Hz, 4096x2160 24Hz,
- General 3D Support on first 16 VIC entries: Frame Packing, Field Alternative, Line Alternative, Side-by-Side (Full), L + Depth, L + Depth +gfx + gfx-depth, Side-by-Side (Half)
- Detailed 3D Declarations For VIC entry #05: Side-by-Side (Full), L + Depth +gfx + gfx-depth, Frame Packing

Number of native formats: 1

## Index

- 1X-THRU, 15
- Cable Bend Limits, 6
- Cable Losses, 15
- Cable Tension (Pull Forces), 6
- Cable Twisting (Torque), 6
- Calibration, 13
- Care and Handling, 6
- CEC testing, 39
- Cleaning, 8
- Compliance
  - WEEE, 32
- Connections
  - HDMI-TPA to DUT, 6
  - SMA, 6, 7
- Connector Shell Grounding, 4
- Crosstalk errors, 14
- DDC/CEC Signals
  - +5V Power, 3
  - CEC, 3
  - DDC/CEC Return, 3
  - Ground, 3
  - Hot Plug Detect, 3
  - Reserved, 3
  - SCL, 3
  - SDA, 3
- de-emphasis, 15
- Directivity errors, 14
- drift errors, 14
- DUT, 14
- E-EDID EE-PROM, 42
- E-EDID Reference Information, 34
- E-EDID User Model, 37
- E-EDID/Low Frequency Control Board, 3, 16, 34
- Electrical Specifications, 20
- Electrostatic Discharge Information (ESD), 9
- environmental changes, 14
- Errors
  - Crosstalk*, 14
  - Directivity*, 14
  - drift*, 14
  - Load Impedance Mismatching*, 14
  - random*, 14
  - Receiver Reflection-tracking in Test Equipment*, 14
  - Receiver Transmission in Test Equipment*, 14
  - Source Impedance Mismatching*, 14
- ESD protection, 9
- Figures
  - Cable Connectors, 17
  - Calibration module, 13
  - E-EDID attached to an HDMI-TPA-P, 36
  - E-EDID CEC jumper positions, 40, 41
  - E-EDID connected for sink testing, 38
  - E-EDID connected for source testing, 39
  - E-EDID/Low Frequency Cntrl Board Schematic, 35
  - E-EDID/Low Frequency Control Board, 16, 34
  - The HDMI Test Adapter (Plug), 3
  - The HDMI Test Adapter (Receptacle), 4
- Glossary, 33
- Group delay, 15
- Handling and Storage, 8
- HDMI Compliance Test Specification, 3, 10, 37
- HDMI plug TPA as a sink, 10
- HDMI plug TPA as a source, 11
- HDMI receptacle TPA as source and sink, 12
- HDMI-TPA Cable Pinout, 17
- HDMI-TPA-E, 16, 34
- HPD sink testing, 38
- HPD source testing, 39
- HPD testing, 37
- Load Impedance Mismatching errors, 14
- low-speed connector, 4
- Low-Speed Connector Part Numbers, 4
- Making Connections, 8
- Mechanical and Environmental Specifications, 17
- Molex Part Numbers, 4
- pre-emphasis, 15
- Product Inspection, 5
- product return, 5
- pull force, 6, 7
- random errors, 14
- Receiver Reflection-tracking in Test Equip. errors, 14
- Receiver Transmission in Test Equipment errors, 14
- secure storage, 5
- SMA cables, 17
- SOLT, 14
- Source Impedance Mismatching errors, 14
- Support, 31
- Supporting Instrument Cables or Accessories, 7
- Tables
  - E-EDID EE-PROM Memory Map, 42
  - E-EDID Electrical Specifications, 36
  - Electrical Specifications, 20
  - General Specifications, 17
  - HDMI Type-A Plug & Recept. Pin Assignments, 19
  - HDMI-TPA Eight Position Cable Connector, 18
  - SMA Cable Connectors (High-Speed), 18
- Terms and Conditions of Sale, 31
- test instrument noise, 14
- test repeatability problems, 14
- User Model Examples, 10, 11, 12
- Visual Inspection, 8
- Warranty, 30
- Web Sites
  - support@wilder-tech.com, 30, 31
  - www.etechnology.com, 32
  - www.wilder-tech.com, 30



WEEE, 32

Visit our website at [www.wilder-tech.com](http://www.wilder-tech.com)



Wilder Technologies, LLC  
11201 NE 9<sup>th</sup> St.  
Vancouver WA, 98684  
Phone: 360-859-3041  
Fax: 360-859-3105  
[www.wilder-tech.com](http://www.wilder-tech.com)

© 2024 Wilder Technologies, LLC  
Document No. 910-0001-001 Rev. G  
Created: 8/26/2009, Revised: 2/29/2024